

SETTING THE AT-D578UV RADIO TO THE DESIRED MODE

When you get the AnyTone mobile radio it might be set to a band you don't really want. You might want to use it commercially with FCC Part 90 certification, so you set it to Mode 0 or 1. If you want to be tri-band, then set it to mode 18. This lesson will explain how to set it to the desired band.

AnyTone Defines the bands to be used as follows:

Mode	Use
0	European Commercial
1	U.S. Commercial
3	European Amateur
4	Band 4
5	Band 5
7	U.S. Amateur
8	Commercial
10	Canada/Australia Amateur
13	Commercial
16	Thailand Amateur
17	Thailand Commercial
18	Band 19 (US Amateur Tri-band)

The following is the frequency allocation of the bands available in the AnyTone AT-D578UV

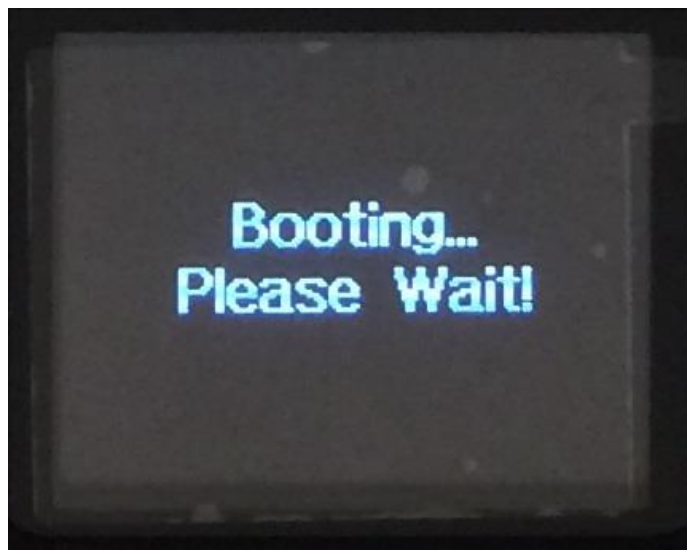
Mode #	VHF Frequency	UHF Frequency	220 Band	Tx/Rx
0	136-174	400-480		Tx
	136-174	400-480		Rx
1	136-174	400-480		Tx
	136-174	400-480		Rx
3	144-146	430-440		Tx
	136-174	400-480		Rx
4	144-146	434-438		Tx
	144-146	434-438		Rx
5	144-146	434-437		Tx
	144-146	434-437		Rx
7	144-148	420-450		Tx
	136-174	400-480		Rx
8	136-174	400-470		Tx
	136-174	400-470		Rx
10	144-148	430-450		Tx
	136-174	400-480		Rx
13	136-174	403-470		Tx
	136-174	400-480		Rx
16	144-147	430-440		Tx
	144-147	430-440		Rx
17	136-174	Off		Tx
	136-174	430-440		Rx
18	144-148	420-450	222-225	Tx
	136-174	400-480	220-225	Rx

To change bands, go through the following steps:

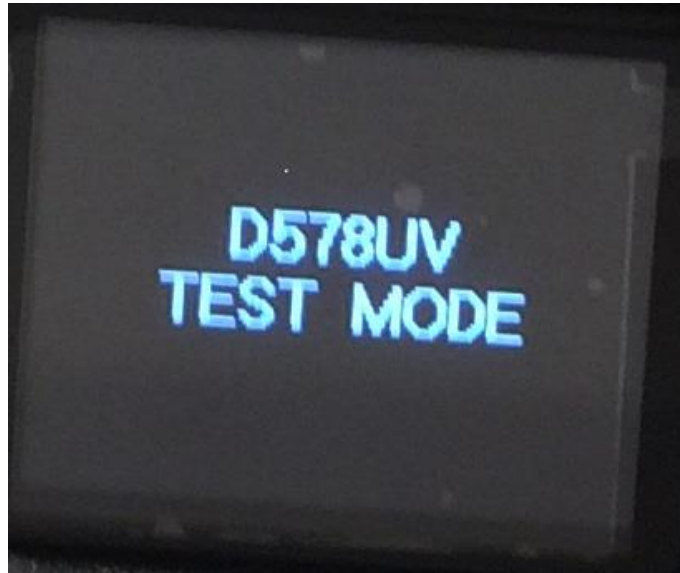
1. Connect radio to power, turn on power supply and turn off radio. The radio should look like the following:



2. Press the P4 Key, Press the Channel Selector Switch, and press the power switch in that order. Keep those three keys pressed.
3. In a short time, the screen should look like this:



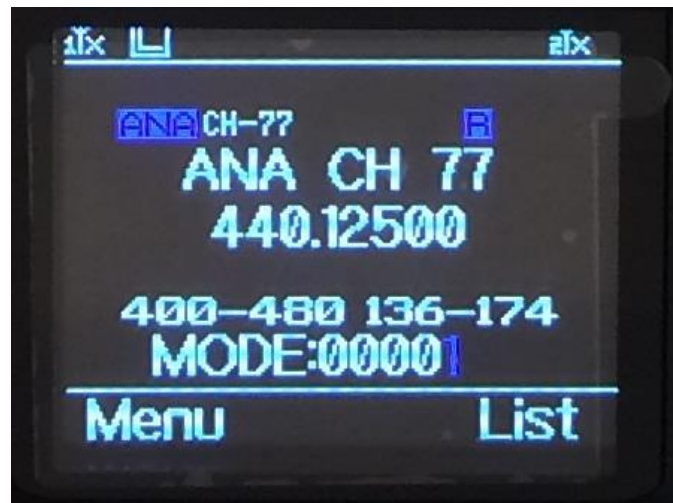
4. Keep the keys pressed and in a short time, the screen should look like this:



5. Now let go of the three keys and the screen should look like the following:

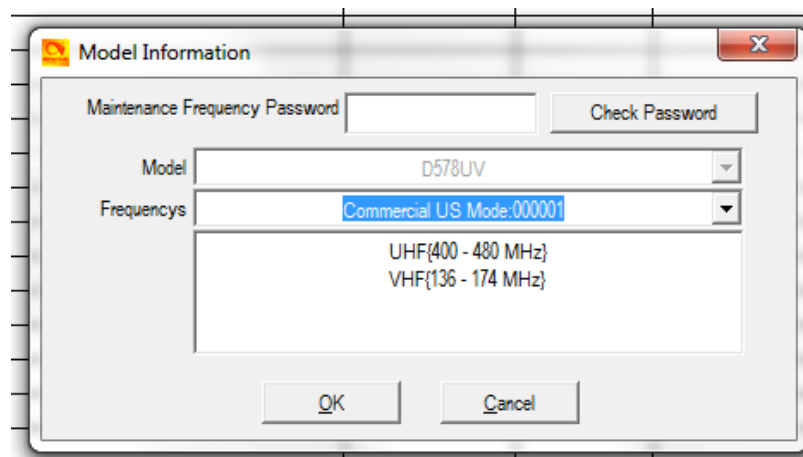


6. A short time later the screen will change to the following:



7. Use the channel selector switch to change the mode from 00001 to 000018. When you get your desired mode, press the menu key and you are finished.

8. Now attach your radio to your computer, activate the CPS, and read the radio. Then click the “Model” pull down menu and you should get the following:



9. The mode here should correspond to the mode you set the radio to.