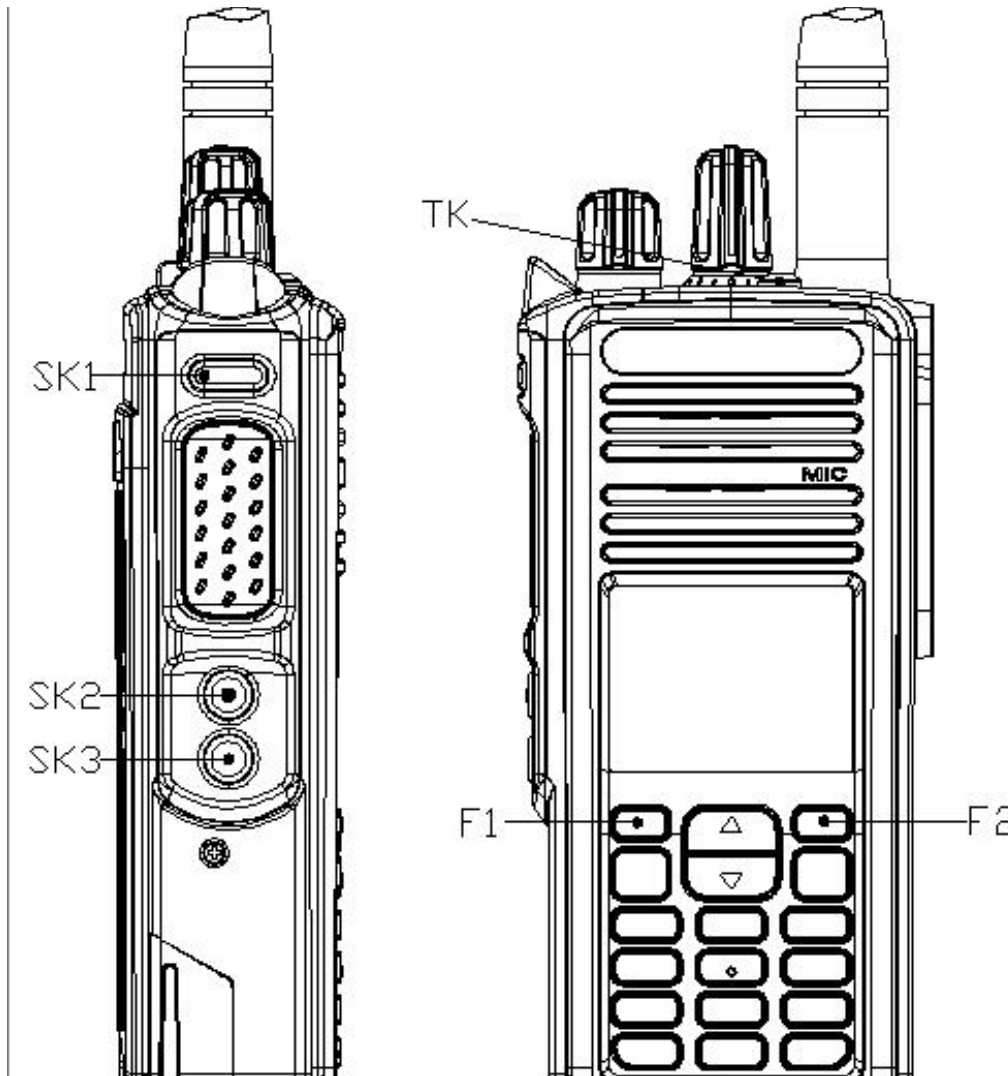


Summary of Converting from the M17 to DMR Protocol

1. Transfer the DR7800S_Bootloader_B5.01_20220413.dfu to the radio using the DFuSeDemo program.
2. Transfer the DR7800S_HOST_V8.01.08_20240514.bin to the radio using the Factory Tool_COMMON program.

You might have to reload the Code Plug and Voice Prompts back to the radio if they were erased from the M17 radio.

Below is a picture of the radio buttons.



Converting from the M17 to DMR Protocol

You need the following programs and hardware:

CS7000 M17 radio

Programming cable

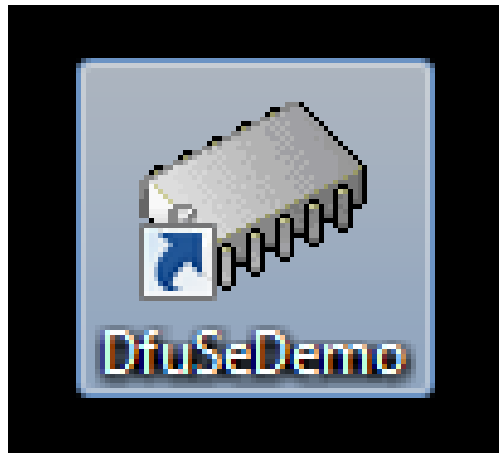
DfuSeDemo program

Factory Tool_COMMON_V5.08.01_setup.exe program

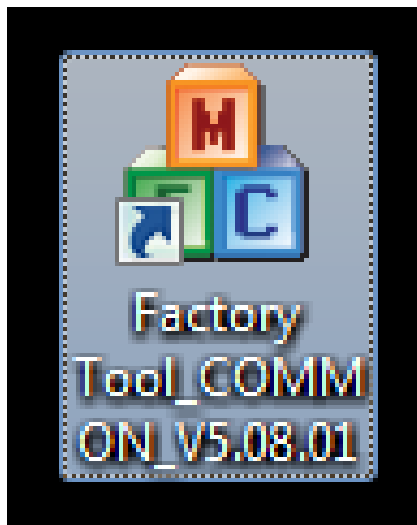
DR7800S_Bootloader_B5.01_20220413.dfu program

DR7800S_HOST_V8.01.08_20240514.bin

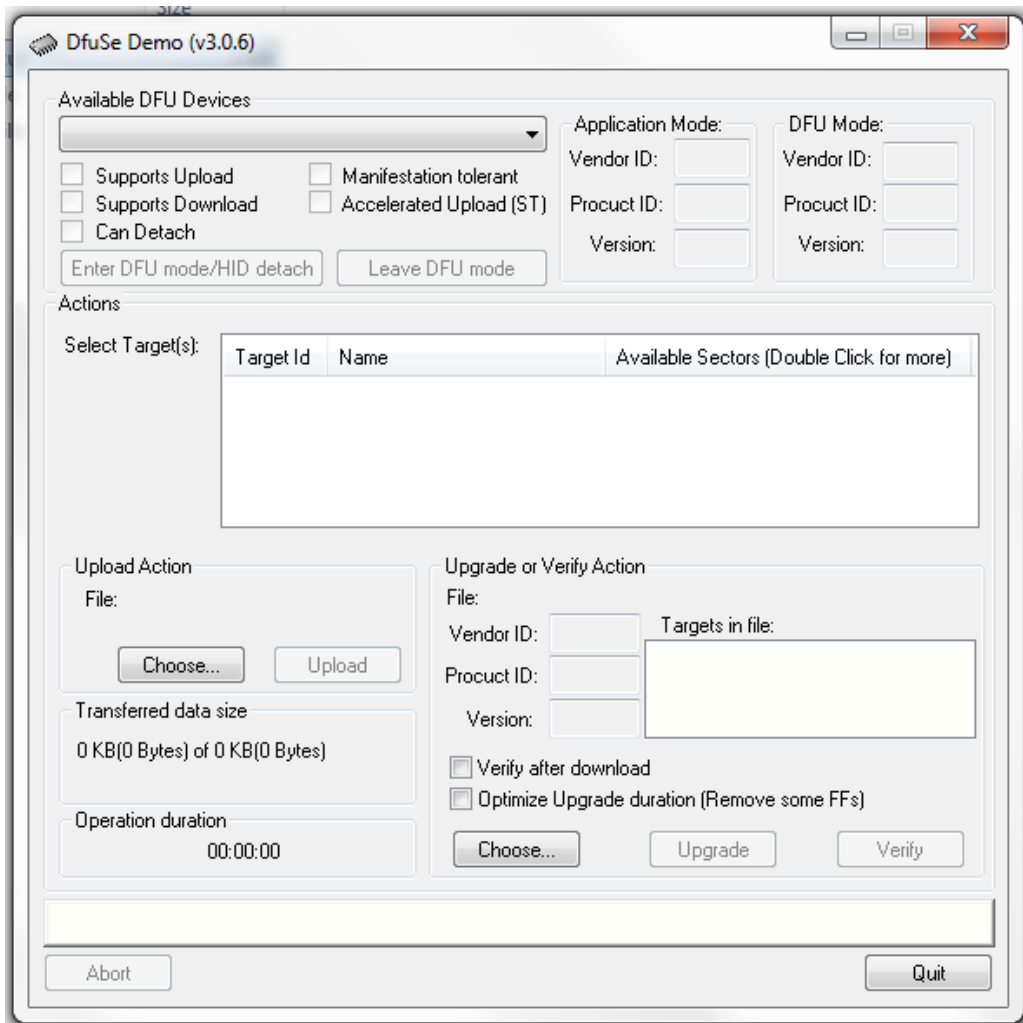
1. If you have not already done it, install the DFuSeDemo Program on your PC. If done properly you should have the following shortcut on your PC.



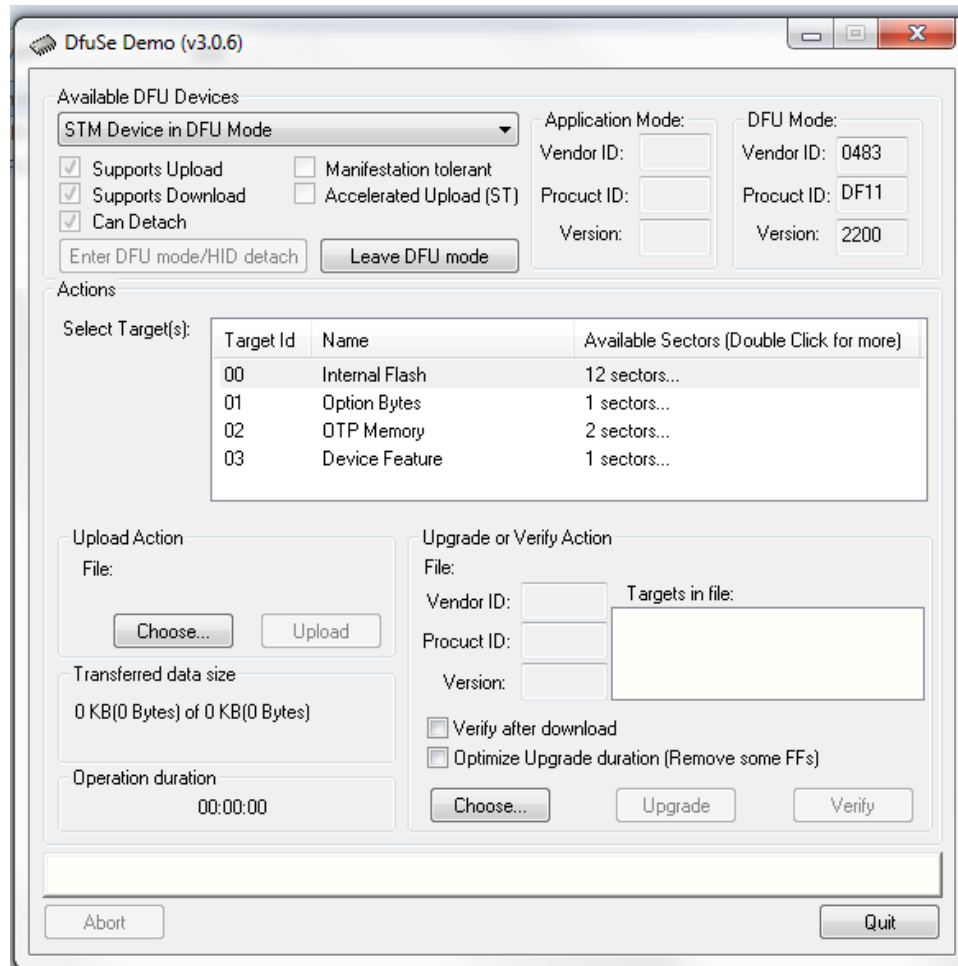
2. If you have not already done it, install the Factory Tool_COMMON program on your PC. If done properly you should have the following shortcut on your PC.



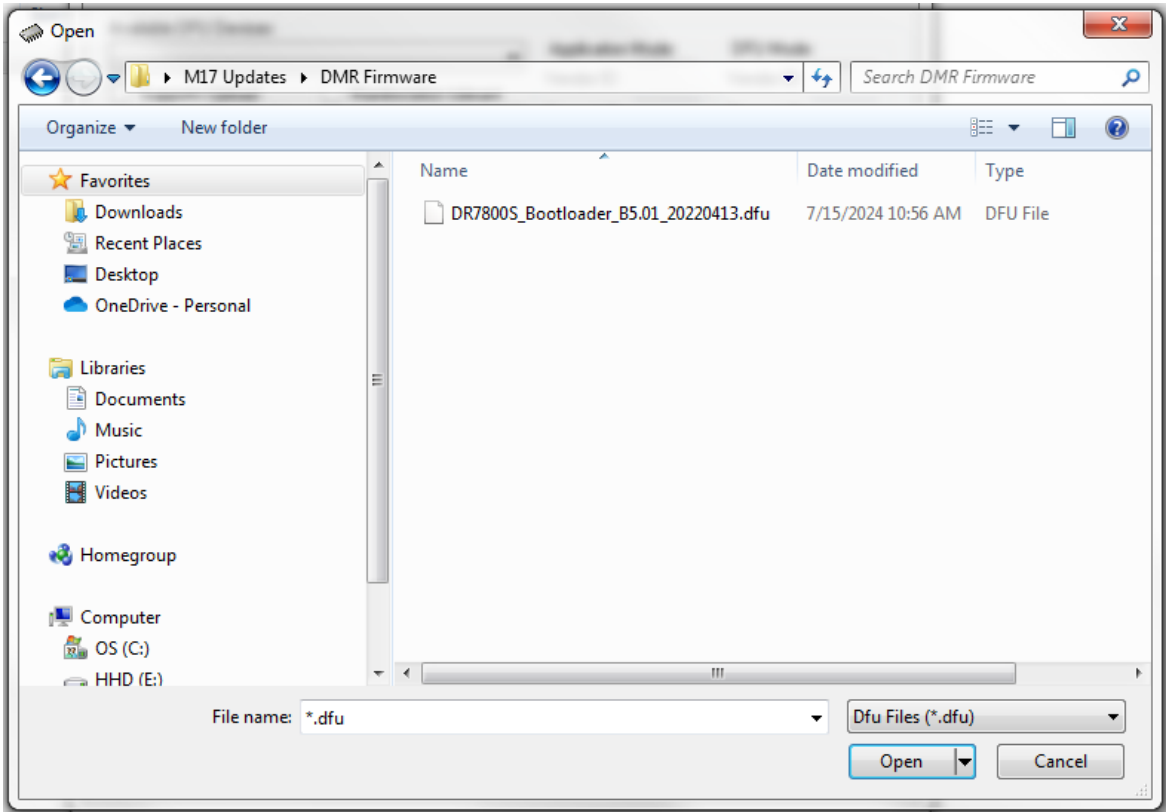
3. Run the DFuSeDemo program and you should get the following Screen:



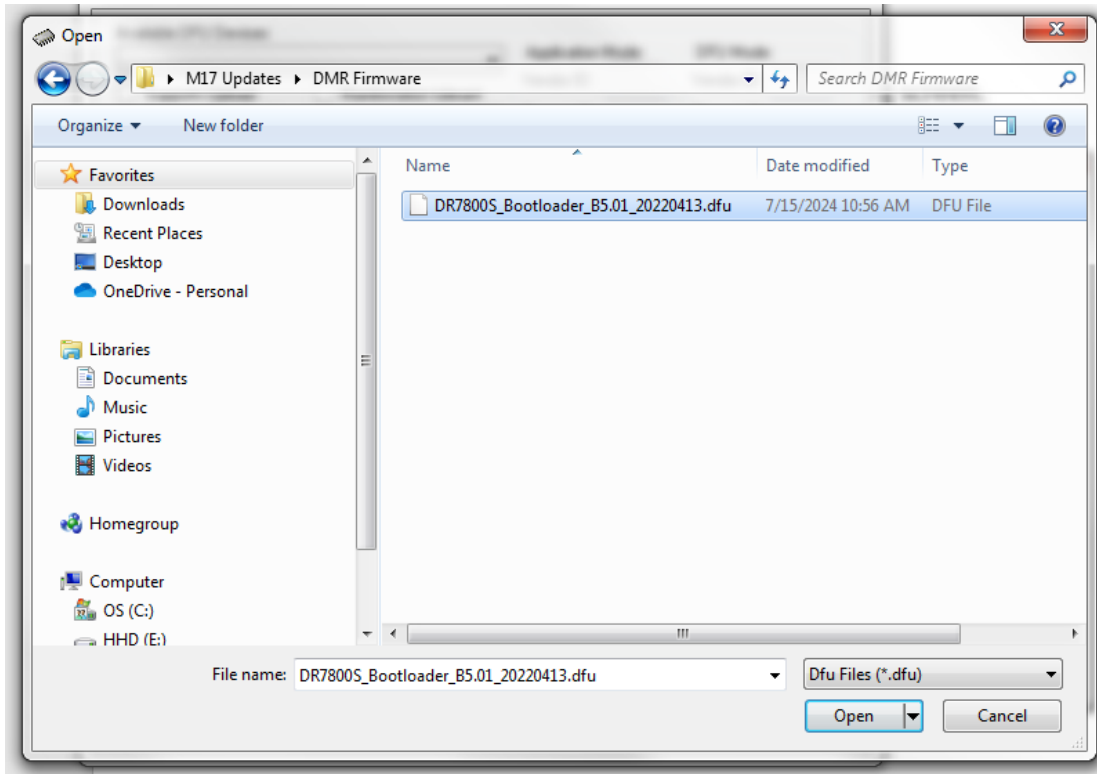
4. Press SK1 and while pressed turn on the radio. Your computer screen should look like the following:



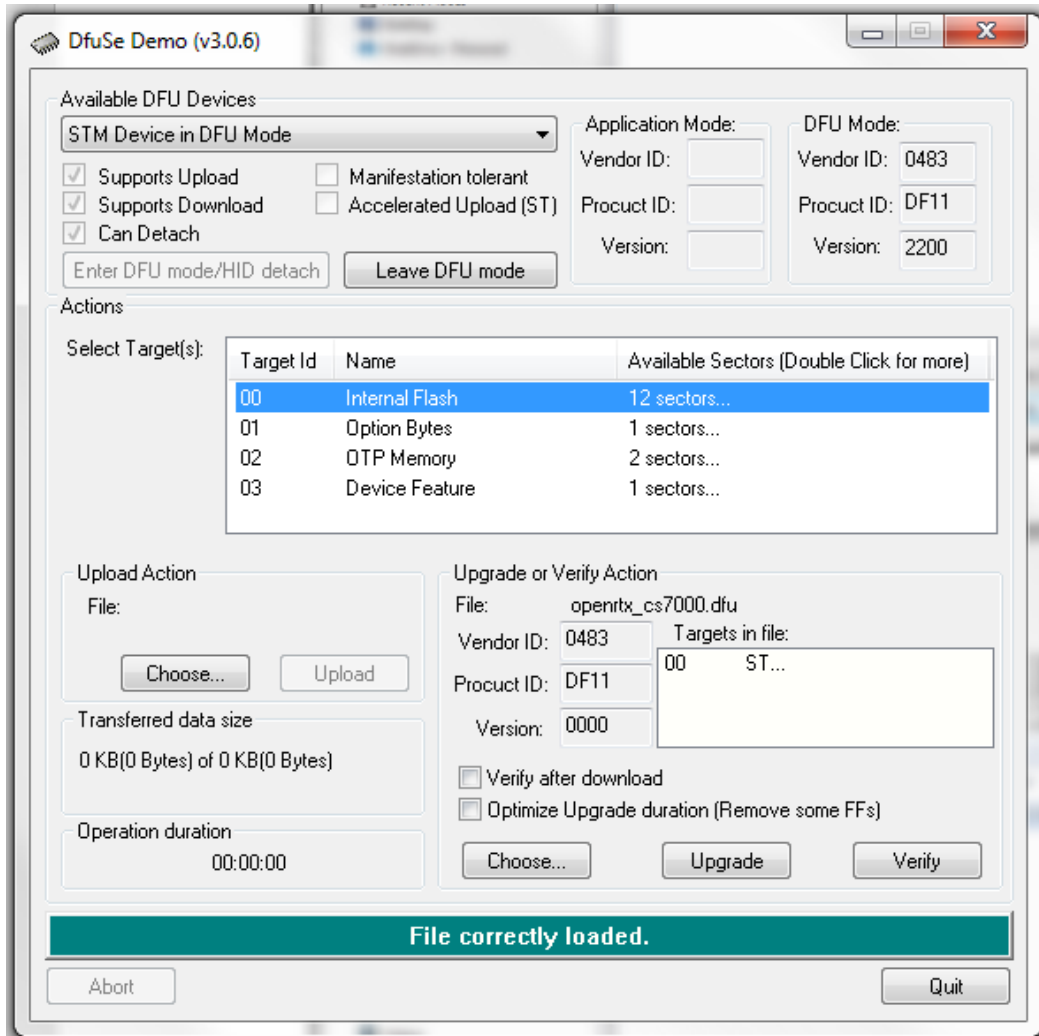
5. Press the choose button and you get the following screen.



6. Find your file and highlight it as follows and then press the Open button.

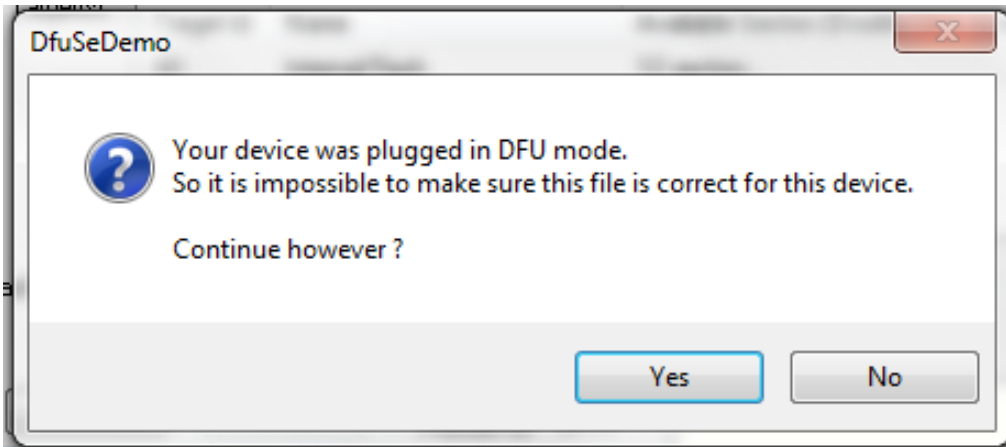


7. You should get the following screen:

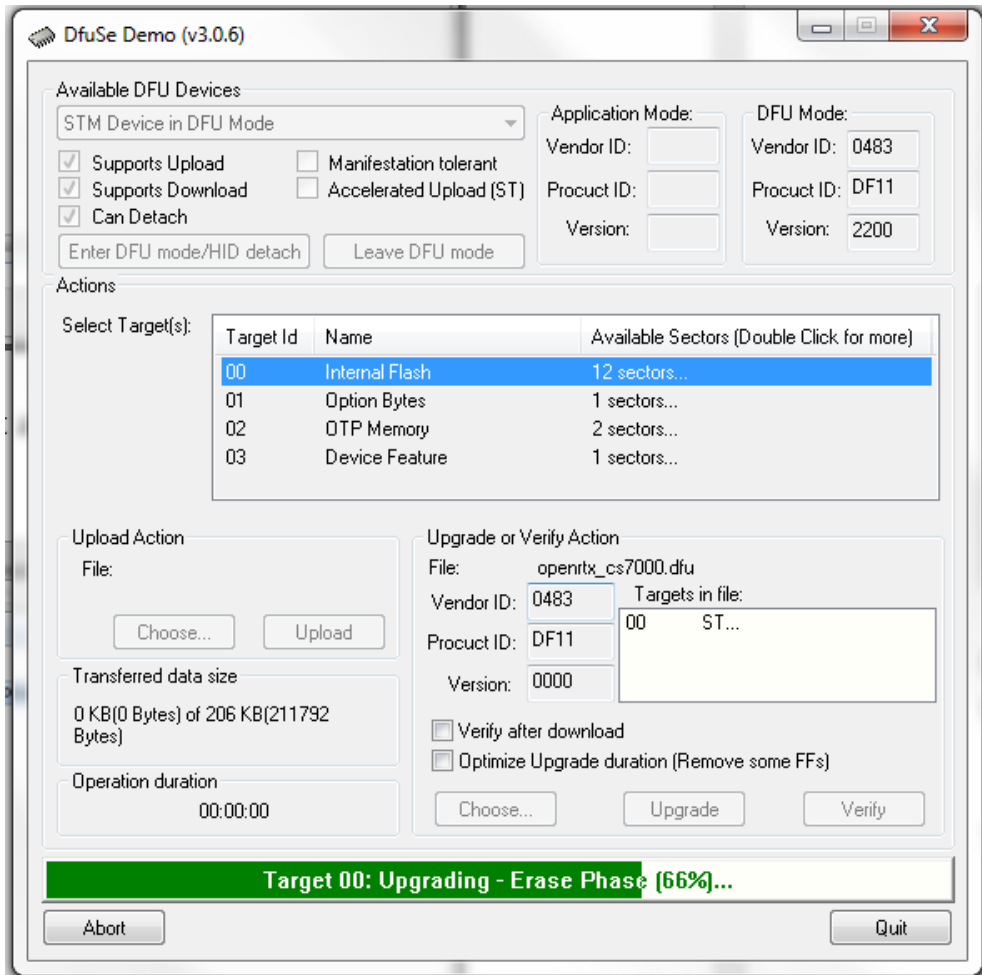


8. Now highlight the Internal Flash as shown on the previous page and press the Upgrade button.

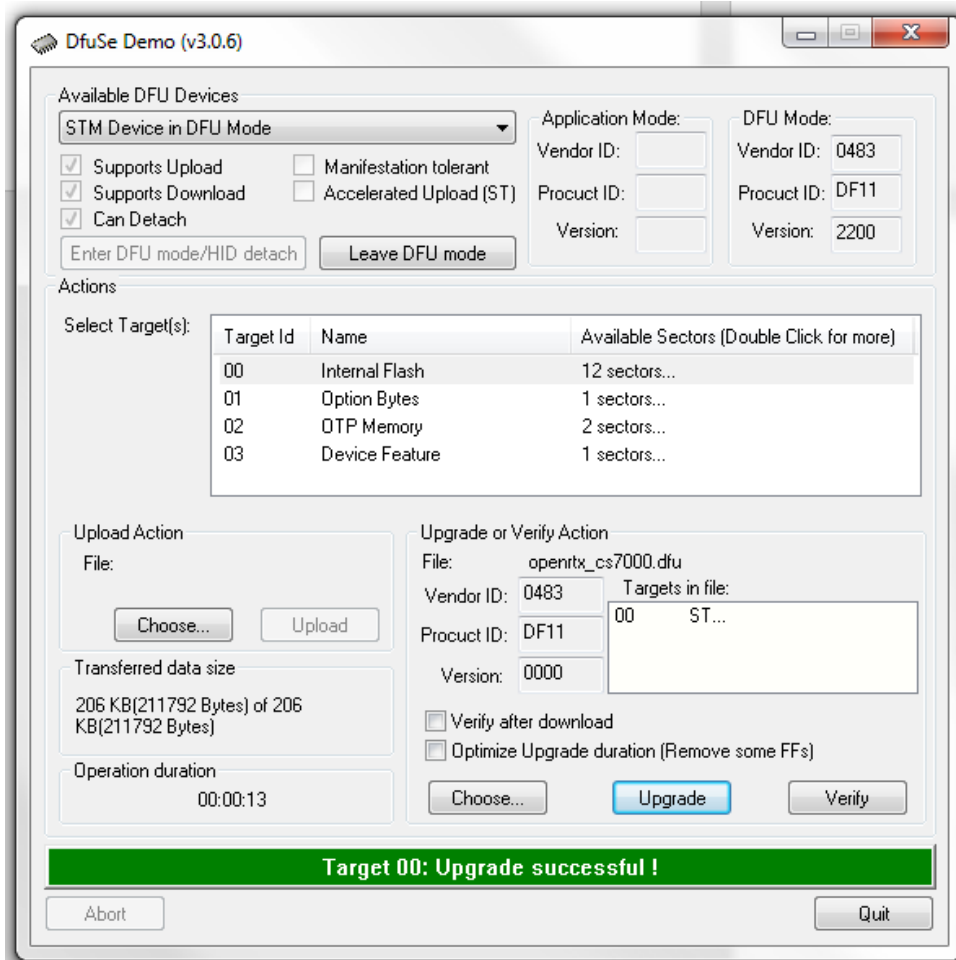
You will get the following warning.



9. Press the Yes button and you will get the following:



10. After a few seconds you will get the following screen:



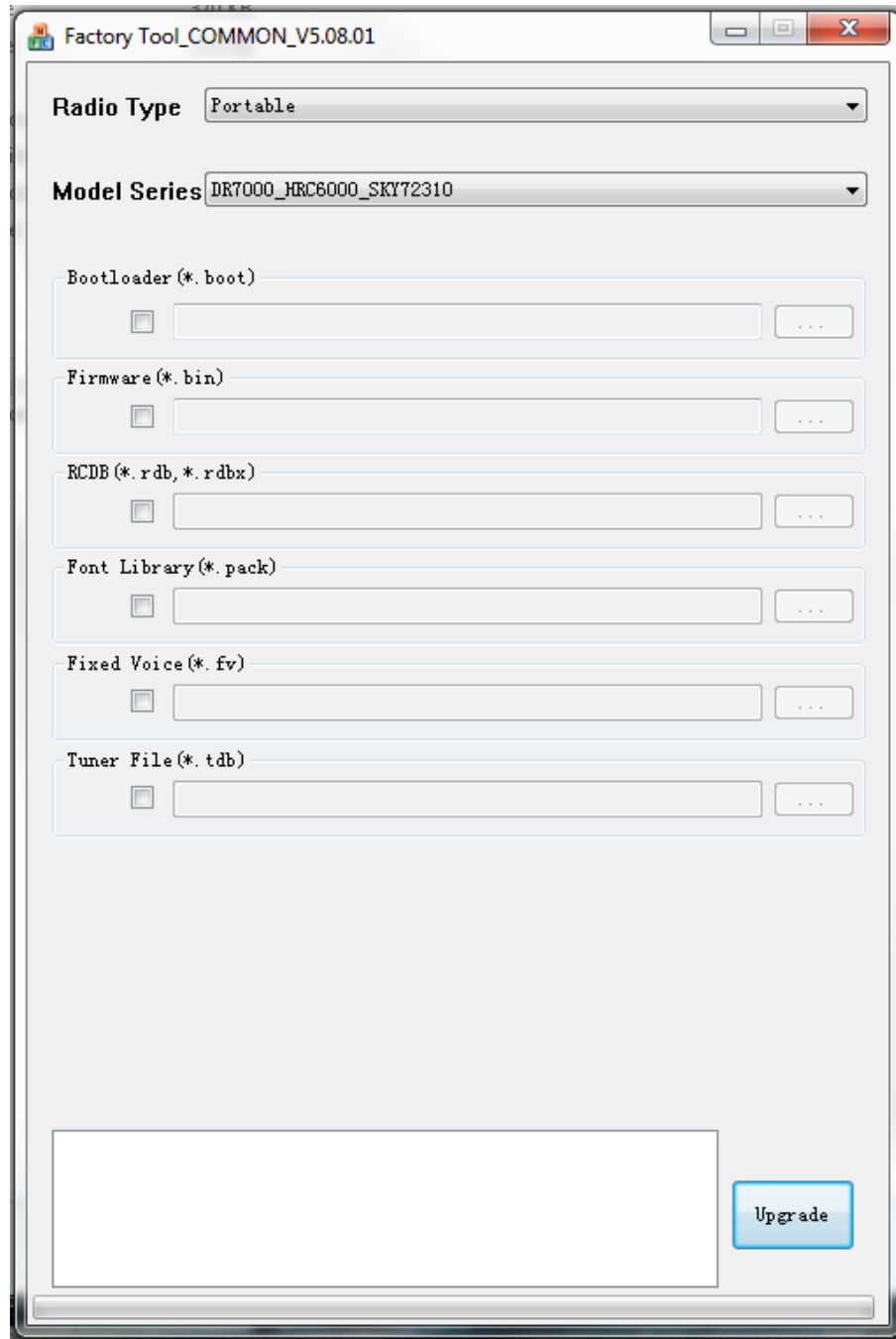
Turn off the radio in preparation for the next step.

You have now completed the first part which is loading the bootloader into the microprocessor.

11. Press the PTT and Orange TK button at the same time and turn on the power. You should get the screen as shown below and the LED should blink Orange, Red, Green.

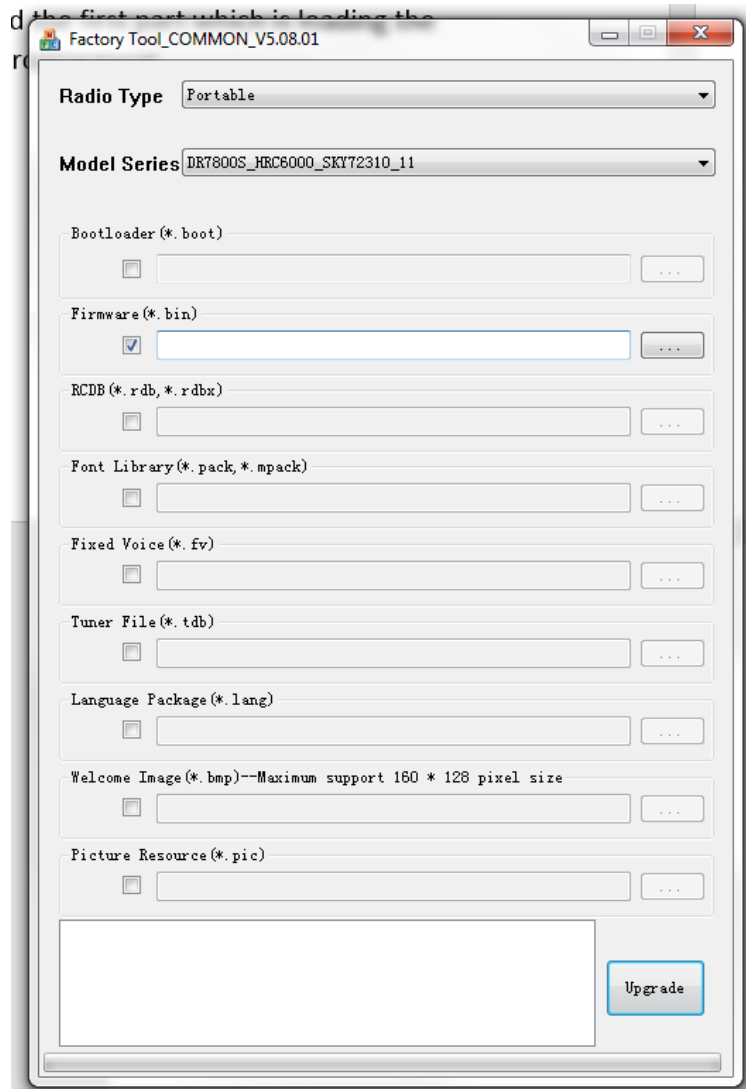


12. Start the Factory Tool_COMMON program and you should get the following:

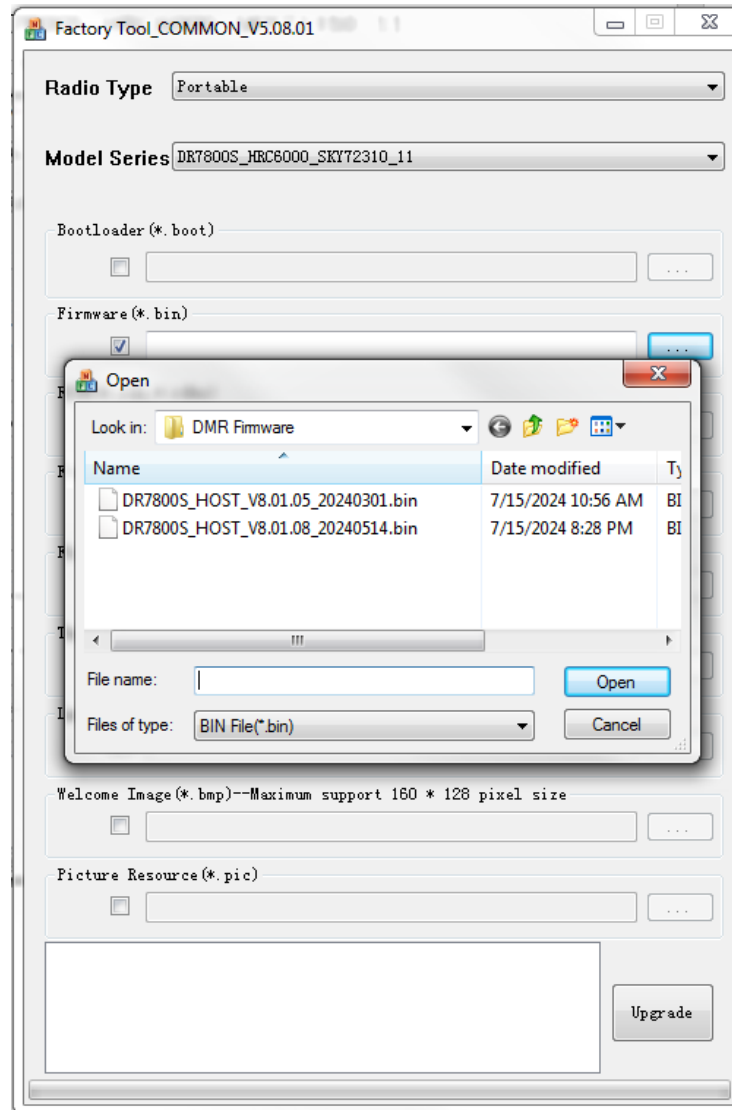


Depending on what you did before, some of the boxes might be checked and some of the file locations might be set.

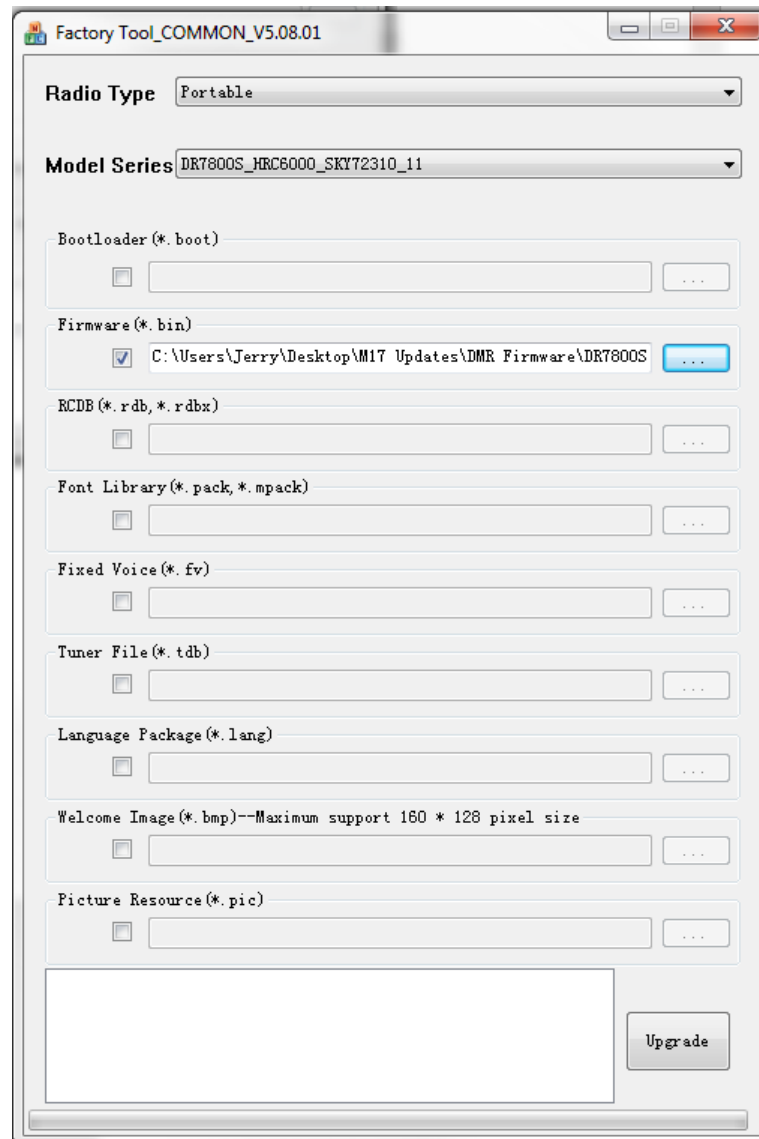
13. Set the Radio Type to Portable,
Model Series to DR7800S_HRC6000_SKY72310_11
Firmware checkbox to checked



14. Press the file locator button the right of Firmware(*.bin) and you get the following:



15. Highlight the latest firmware version and press the Open button and you get the following:

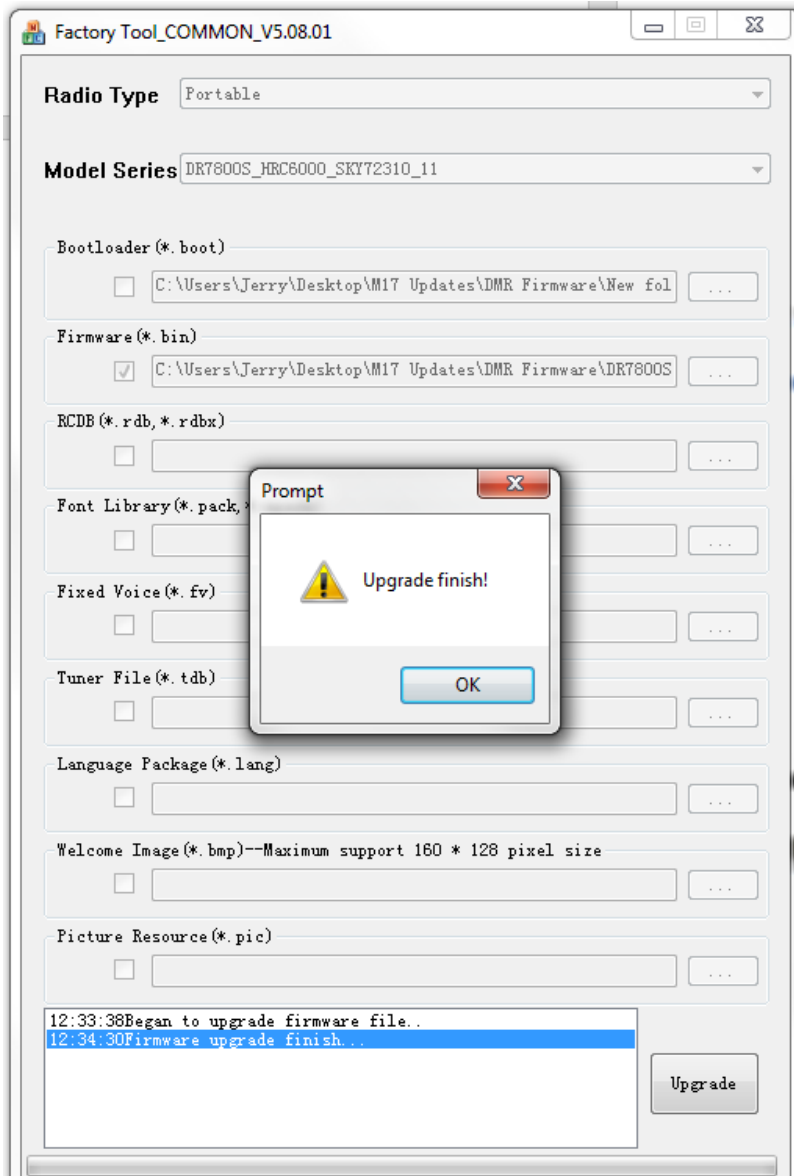


Notice the file location is now in the box adjacent to the Firmware(*.bin)

16. Press the Upgrade button and in a few seconds, you get the following screen.



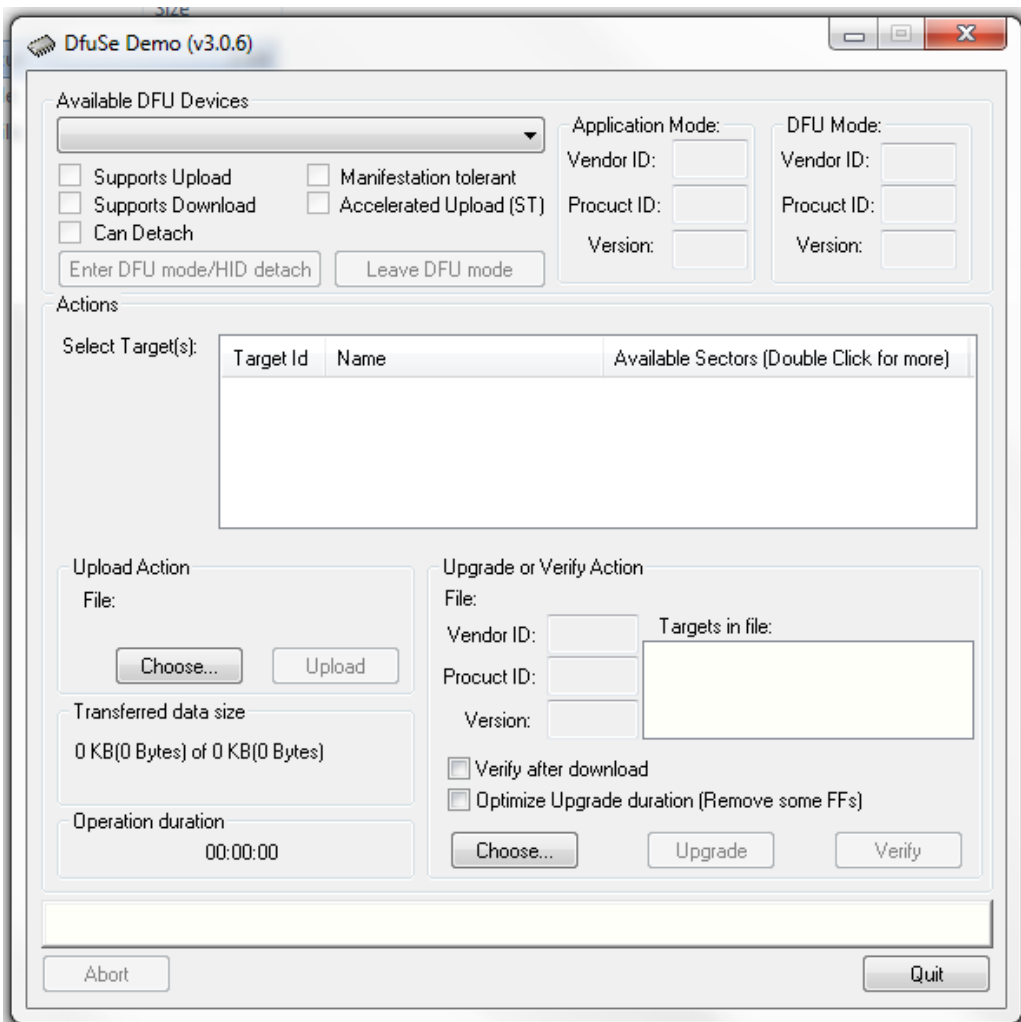
17. In a few more seconds it will be finished, and you get the following screen.



Press the OK button and your radio should now show the DMR screen.

Installing the driver for the DfuSeDemo program manually

If after Pressing SK1 and while pressed turning on the radio you get the following screen, you might need to manually install the driver.



Normally, this program if it needs a driver, finds it over the internet and gives you an option to install a local driver. Some operating systems do not seem to get the driver. If that is your situation, you should install the driver manually.

On your computer, go to the following directory:

C:\Program Files (x86)\STMicroelectronics\Software\DfuSe
v3.0.6\Bin\Driver

If you go there you should see the following:

Name	Date modified	Type	Size
Win7	1/11/2021 7:09 PM	File folder	
Win8	1/11/2021 7:09 PM	File folder	
Win8.1	1/11/2021 7:09 PM	File folder	
Win10	1/11/2021 7:09 PM	File folder	
version.txt	6/11/2018 12:53 AM	Text Document	4 KB

Now you have to match your windows version to your computer. I would expect Windows 10 to work with Windows 11.

Go into the folder matching your operating system and then go into the folder matching the type of operating system.

Name	Date modified	Type	Size
x64	1/11/2021 7:09 PM	File folder	
x86	1/11/2021 7:09 PM	File folder	
DFU_Win7_x86x64_v3.0.4.0_LogoVerificati...	7/10/2012 6:35 PM	Adobe Acrobat D...	132 KB

If you go into the x64 bit folder you get the following:

Name	Date modified	Type	Size
x64	1/11/2021 7:09 PM	File folder	
dpinst_amd64.exe	2/8/2010 10:36 PM	Application	1,026 KB
sttube.cat	7/10/2012 6:38 AM	Security Catalog	9 KB
STtube.inf	7/9/2012 11:02 PM	Setup Information	10 KB

Run the dpinst_amd64.exe program to install the driver.

If you go into the x86 folder you get the following:

Name	Date modified	Type	Size
x86	1/11/2021 7:09 PM	File folder	
dpinst_x86.exe	2/8/2010 9:59 PM	Application	901 KB
sttube.cat	7/10/2012 6:38 AM	Security Catalog	9 KB
STtube.inf	7/9/2012 11:02 PM	Setup Information	10 KB

Run the dpinst_x86.exe program to install the driver.

The Windows 10 folder is an exception. When you go into the folder you get the following:

Name	Date modified	Type	Size
x64	1/11/2021 7:09 PM	File folder	
x86	1/11/2021 7:09 PM	File folder	
dpinst_amd64.exe	2/8/2010 10:36 PM	Application	1,026 KB
dpinst_x86.exe	2/8/2010 9:59 PM	Application	901 KB
sttube.cat	4/27/2018 6:38 AM	Security Catalog	11 KB
STtube.inf	4/27/2018 3:31 AM	Setup Information	13 KB

Both programs are here so run what is appropriate for your computer.