

# Computer Programming Software Start Guide

## 1. Hardware Interface

Use an RS232 COM cable, plug one end to “Programming” DB9 port on the FLEX III-A front panel, and another end to your computer COM port.

Note: Most laptop computers do not have a COM port anymore. You can buy a USB to COM adapter to install in your computer. The one we are using is KEYSpan USB SERIAL ADAPTER, which costs about \$40 to \$50.

## 2. Software Environment

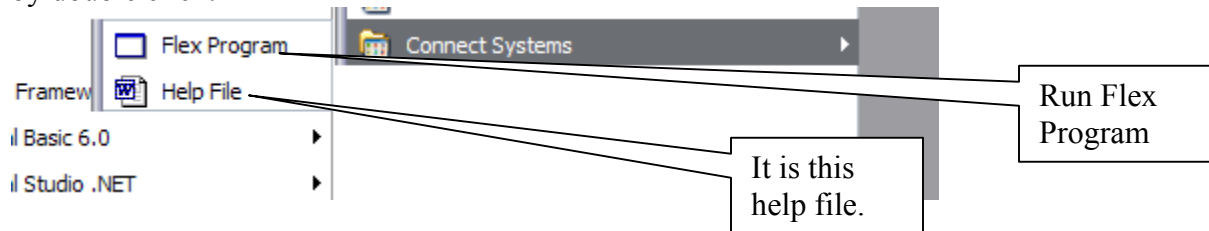
The computer programming software works in Windows 2000 or Windows XP with Microsoft .net Framework 1.1 installed. In the CD which you get from CSI, there are two .exe files, dotnetfx.exe and Flex\_V10063005 1845.exe. If you do not have Microsoft .net Framework 1.1, you can run dotnetfx.exe to install it in your computer or go to [www.microsoft.com](http://www.microsoft.com) to download the latest Microsoft .net Framework.

## 3. Software Installation

In the CD which you get from CSI, run Flex\_V10063005 1845.exe. It will install the Flex Program in your computer.

## 4. Software Startup

Go to Windows Start, select “All Programs”, find “Connect Systems”, then run “Flex Program” by double click.



## 5. LTR System

On each site, the LTR system can have up to 20 FLEX III-A controllers, but only one of them is the master. Or the LTR system can have up to 20 units of the FLEX III-A controllers and FLEX IV network controllers, and one of the FLEX IV network controllers has to be the master in the site.

The master will keep all parameters except slaves' Repeater Number and Site Number and transfer the parameters to FLEX III-A slaves through the LRT Bus. (Note: FLEX IV slaves keep their own parameters.) When you want to change the parameters for the FLEX III-A slaves or enable or disable some IDs, it must be done in the master. If you try programming the FLEX III-A slaves, you will lose all the data when the LTR bus is connected!

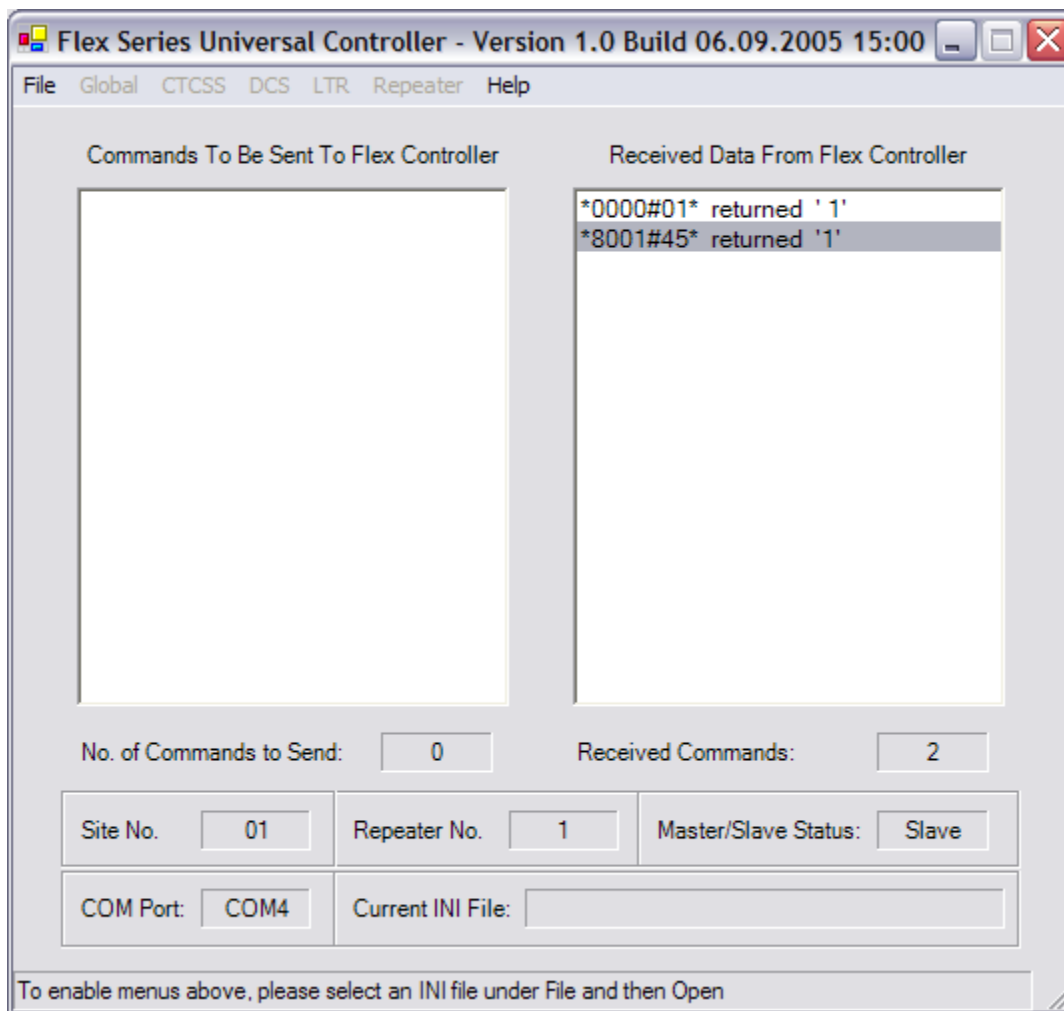
If you have the FLEX IV unit as the master, you can remotely change the parameters through the Ethernet.

## 6. Steps to set up LTR controllers (Slave)

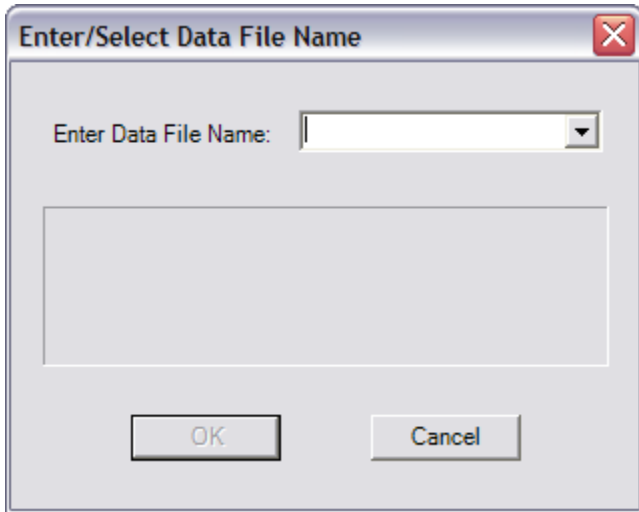
6-a). When you get the FLEX III-A, it has the factory default settings. Or you can set the unit back to factory default by using Hyperterminal in your PC. (Please refer to the User's Instruction Manual.)

6-b). Connect the FLEX III-A to your PC using an RS232 cable.

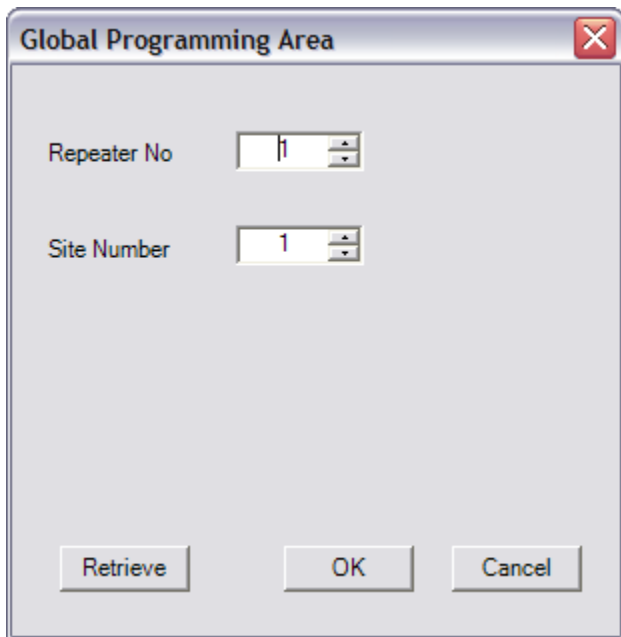
6-c). Run the FLEX Program in your PC. It will ask you to input COM port and Site Number for this FLEX III-A. Input the right COM port for your PC and input "Site Number" to 1. You will see the window as follows:



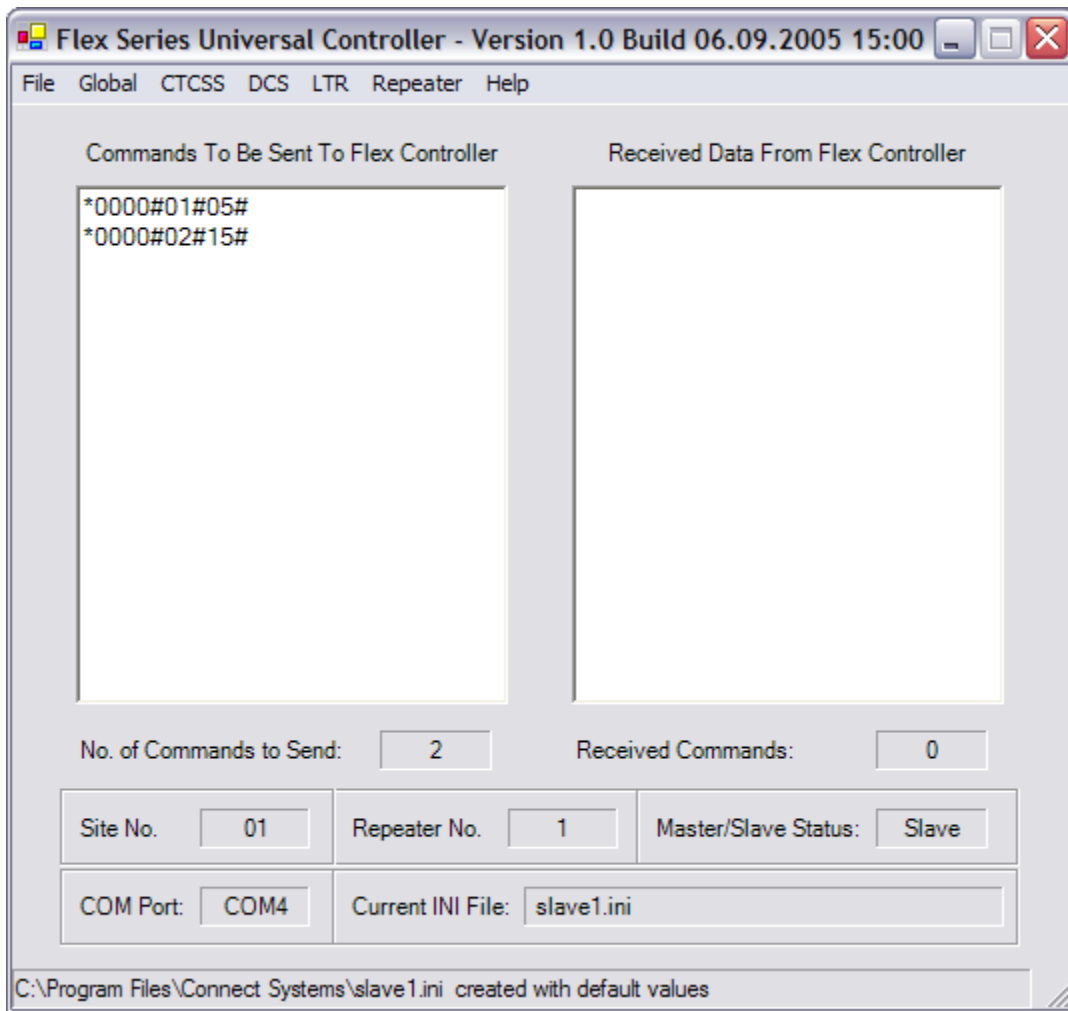
6-d). Choose File->New, give a name. For example, you input “ MountainViewSlave5” corresponding to repeater 5 installed at location Mountain View. Note there are no spaces in the name. Click “OK”.



6-e). Choose “Globe”-> “Repeater Number”. Input the Repeater Number and Site Number. Then click “OK”.



If you input Repeater Number as 5, site number as 15, you will see the following window:



6-f). Choose “File” -> “Send”.

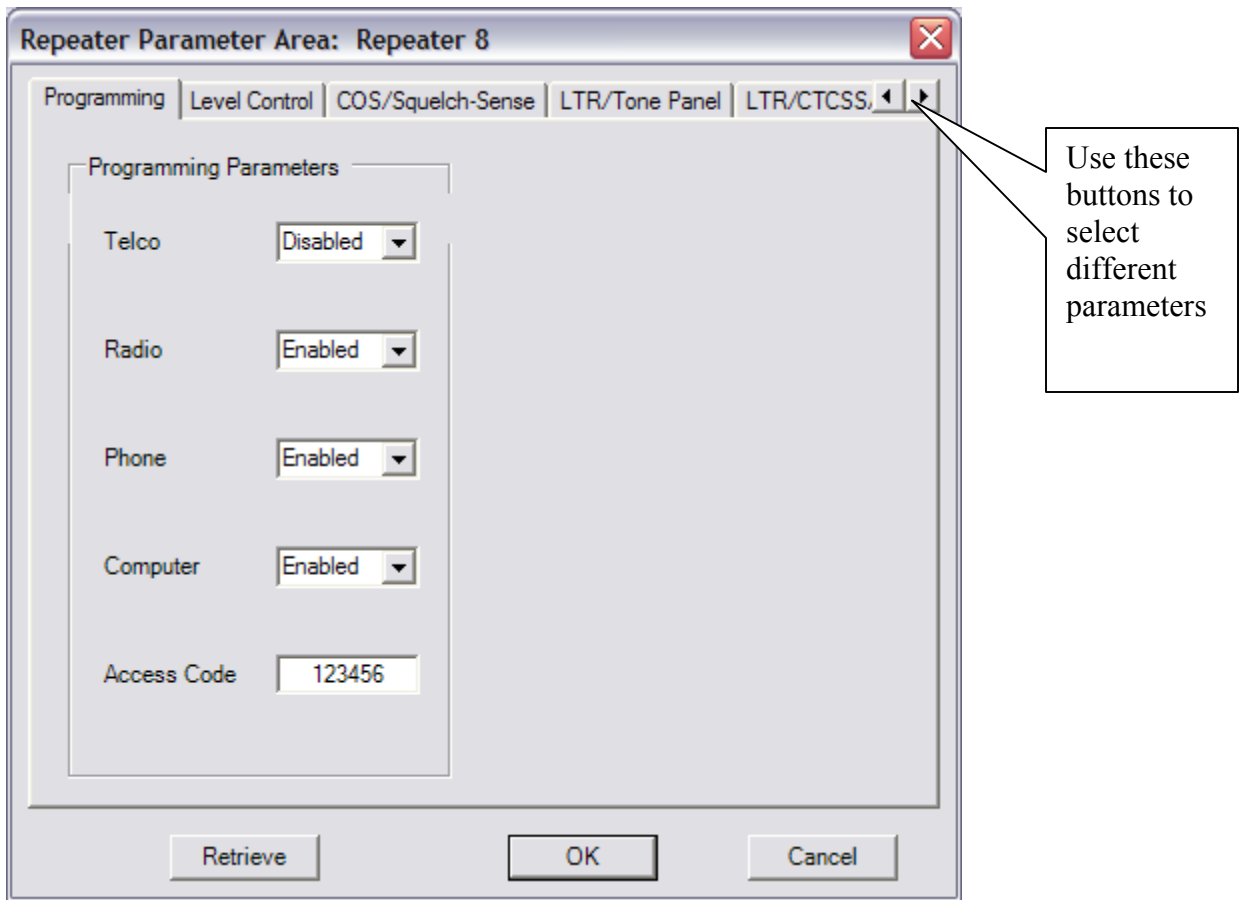
6-g). Repeat above steps to all the FLEX III-A controllers. Make sure you assign a unique site number and right Repeater Number to each FLEX III-A (slave).

## 7. Steps to set up LTR controllers (Master)

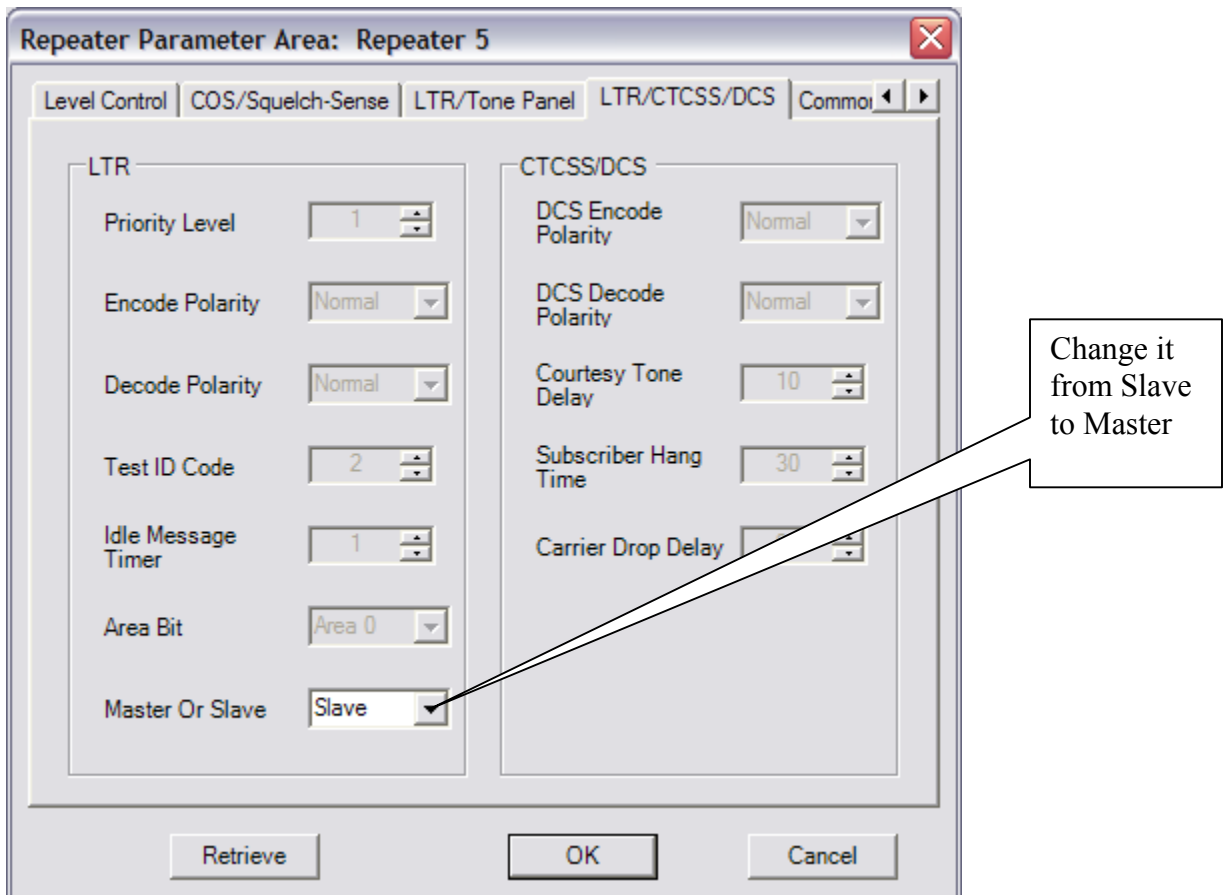
7-a). Repeat 6-a), 6-b), 6-c), 6-d). Give a name for the master, such as MountainViewMaster08.

7-b). Choose “Globe” -> “Repeater Number”. Input the “Repeater Number” and “Site Number”. Then click “OK”.

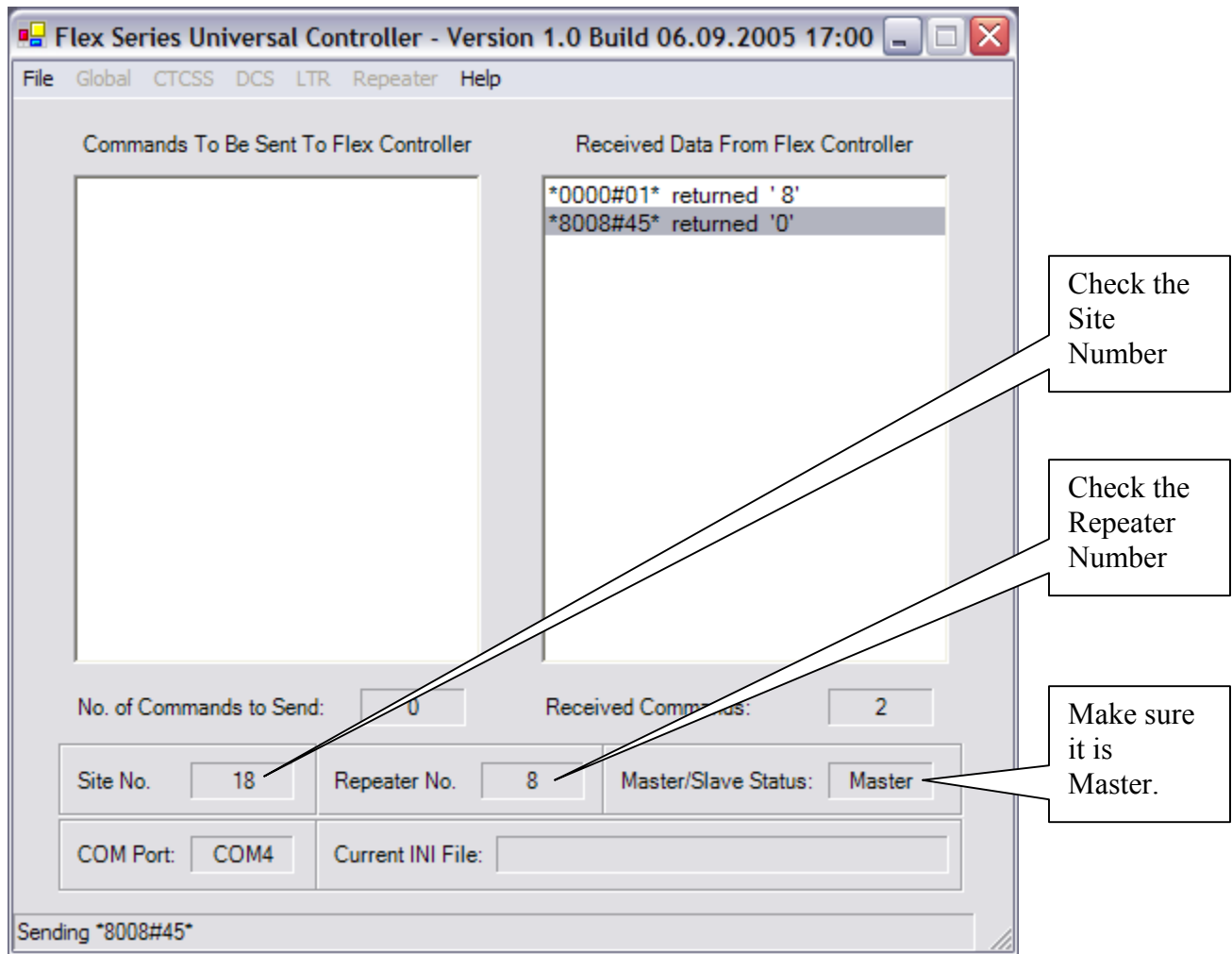
7-c). Choose “Repeater”, select “Repeater NN”. (NN is your master’s Repeater Number).



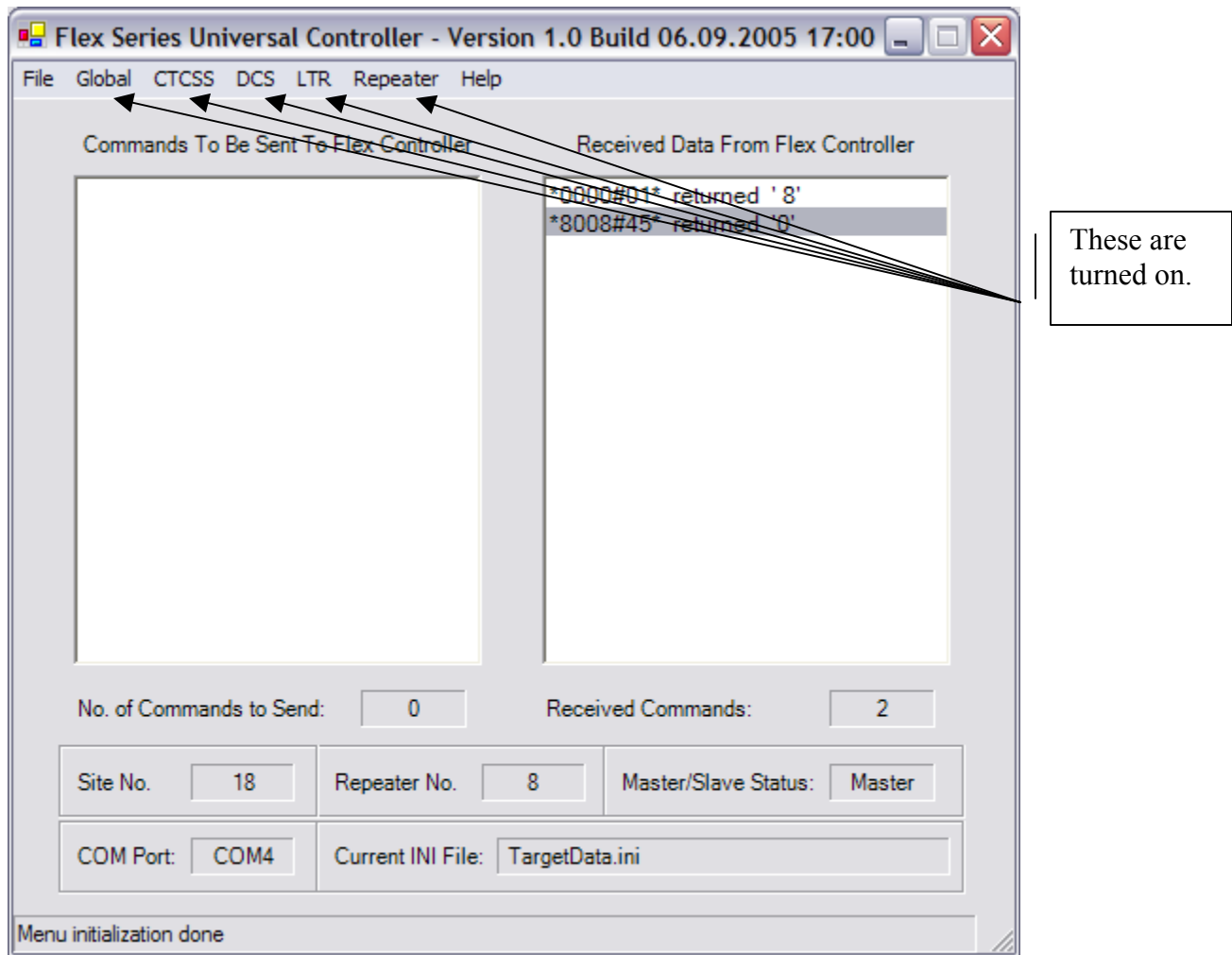
7-d). Choose “LTR/CTCSS/DCS”, then change “Master or Slave” to Master. Click “OK”.



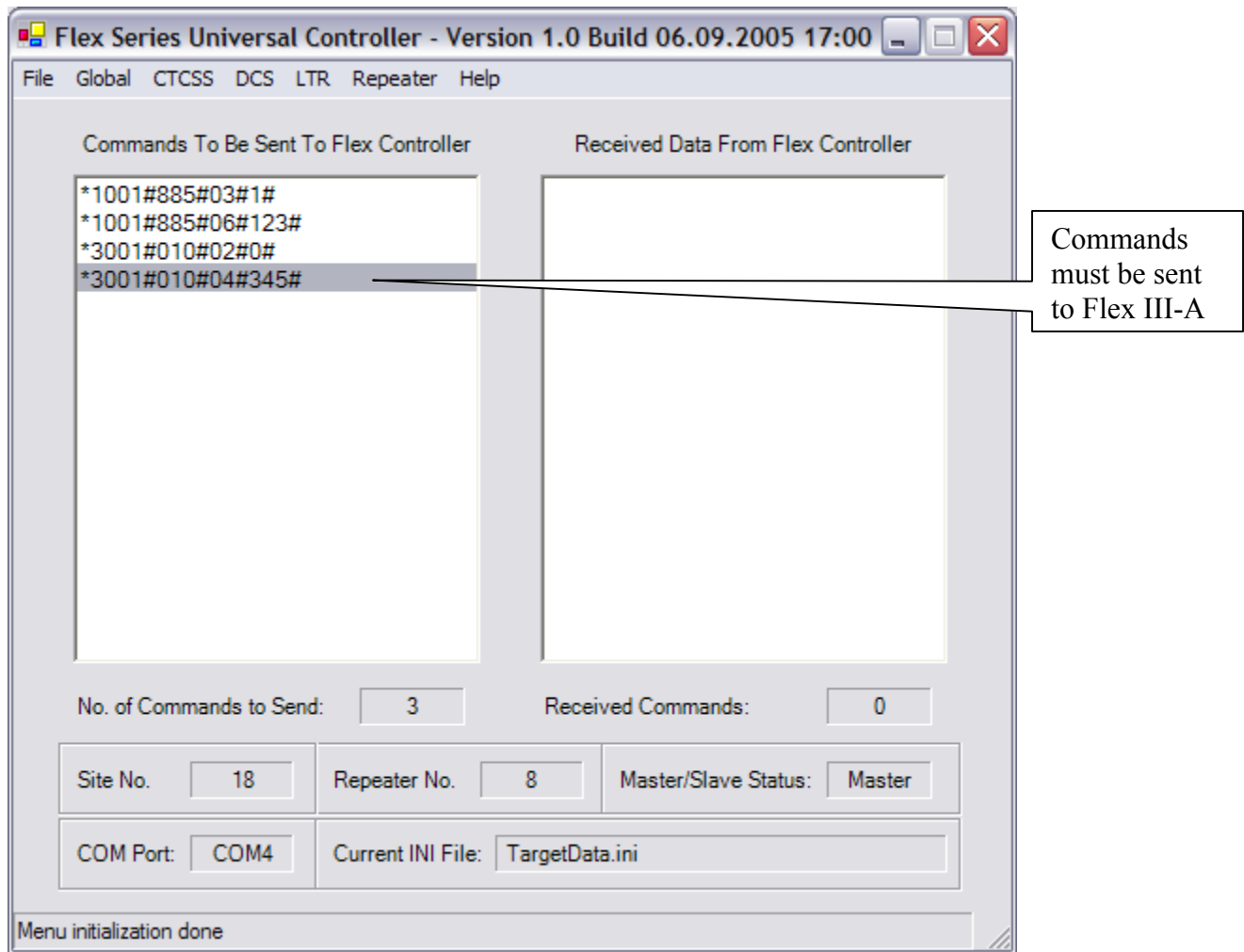
7-e). After you have changed the unit from the slave to the master, you will see the following window.



7-f). You will then see the CTCSS, DCS, LTR, REPEATER are all enabled.



7-g). You can now start to select the parameters you want to change. In each sub window, you click “OK” when you done. It adds the commands in “Commands to Be Sent to FLEX Controller”.

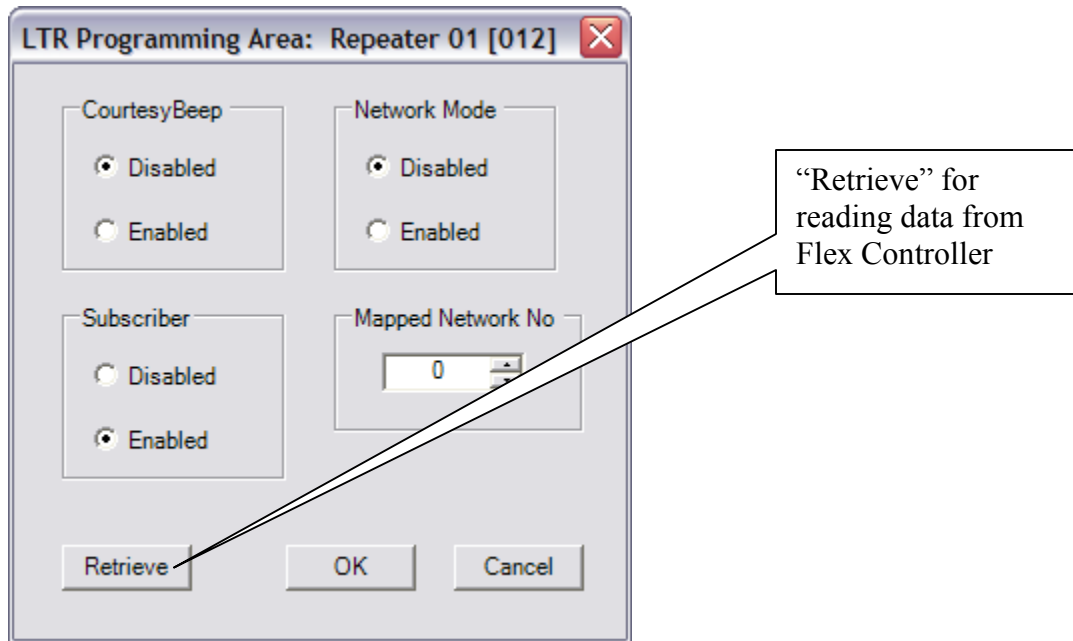


7-h). After you finish selecting parameters, you choose “File”-> “Send”. Wait for the program to send out all commands. Then close the program.

## 8. Helpful Features

### “Retrieve” Button

If you want to read the data in the FLEX Controller, there is a “Retrieve” button in each sub window. When you click “Retrieve”, the FLEX Controller will send the parameters in that sub window back to the sub window.



After finishing read, you can change the parameters in that sub window, click “OK”. The commands will show in “Commands to Be Sent to FLEX Controller. When you are done, choose “File” -> “Send”.

## Timeout Error

The FLEX Program always remembers the last Site Number you were programming. When you try to program another FLEX Controller, you have to wait 20 seconds and get the following message.



Click “OK”. Input the right Site Number. Then you can continue programming.

## How can we avoid the Timeout Error?

There is a way to get around this. Choose “Start” in your PC, -> “My Computer”-> “C:” -> “Program Files” -> “Connect Systems”. Open “SiteNo.txt” using Notepad. Change the number to match the Site Number for the FLEX Controller and save it.

Run FLEX Program, and you will no longer get that Timeout Error.

## **9. Contact Information**

**Phone: (805) 642-7184**

**Fax: (805) 642-7271**

**Email: [ConnectSystems@sbcglobal.net](mailto:ConnectSystems@sbcglobal.net)**

**Address: 1802 Eastman Ave. Suite 116  
Ventura, Ca 93003**

**If you call, please ask for Lisa or Jerry**