

# Computer Programming Software Start Guide

The current version of the FLEX IIIA CTCSS software is the same software as used in the FLEX IIIA product. The following things should be noted when using the software for programming the FLEX IIIA CTCSS product.

- The repeater number and site number must be set to 1.
- The Master/Slave parameter must be set to Master.
- Only use Repeater 1 for programming.
- Many of the Parameters used in the FLEX IIIA is not used in the FLEX IIIA CTCSS.

## 1. Hardware Interface

Use an RS232 COM cable, plug one end to “Programming” DB9 port on the FLEX III-A CTCSS front panel, and another end to your computer COM port.

Note: Most laptop computers do not have a COM port anymore. You can buy a USB to COM adapter to install in your computer. The one we are using is KEYSpan USB SERIAL ADAPTER, which costs about \$40 to \$50.

## 2. Software Environment

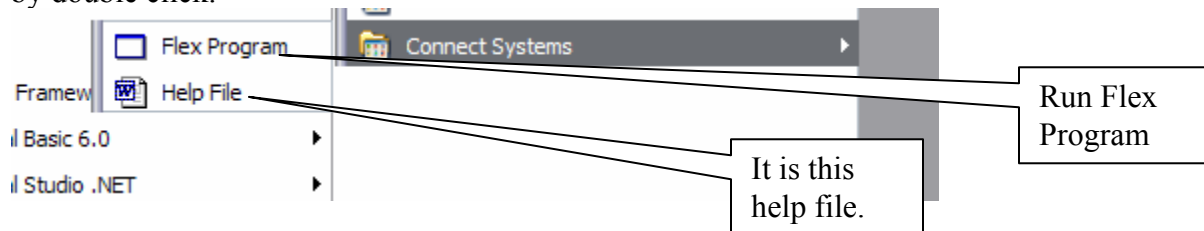
The computer programming software works in Windows 2000 or Windows XP with Microsoft .net Framework 1.1 installed. If you do not have Microsoft .net Framework 1.1 or later, you can run dotnetfx.exe to install it in your computer or go to [www.microsoft.com](http://www.microsoft.com) to download the latest Microsoft .net Framework. You can get Net Framework version 2.0 from our website.

## 3. Software Installation

The parameter program software is available on our web site by following the links shown below. SUPPORT →SOFTWARE→FLEXIII A→“COMPUTER PROGRAM FOR PARAMETER PROGRAMMING”. Store it on the desktop, double click the program, and the program will self install.

## 4. Software Startup

Go to Windows Start, select “All Programs”, find “Connect Systems”, then run “Flex Program” by double click.

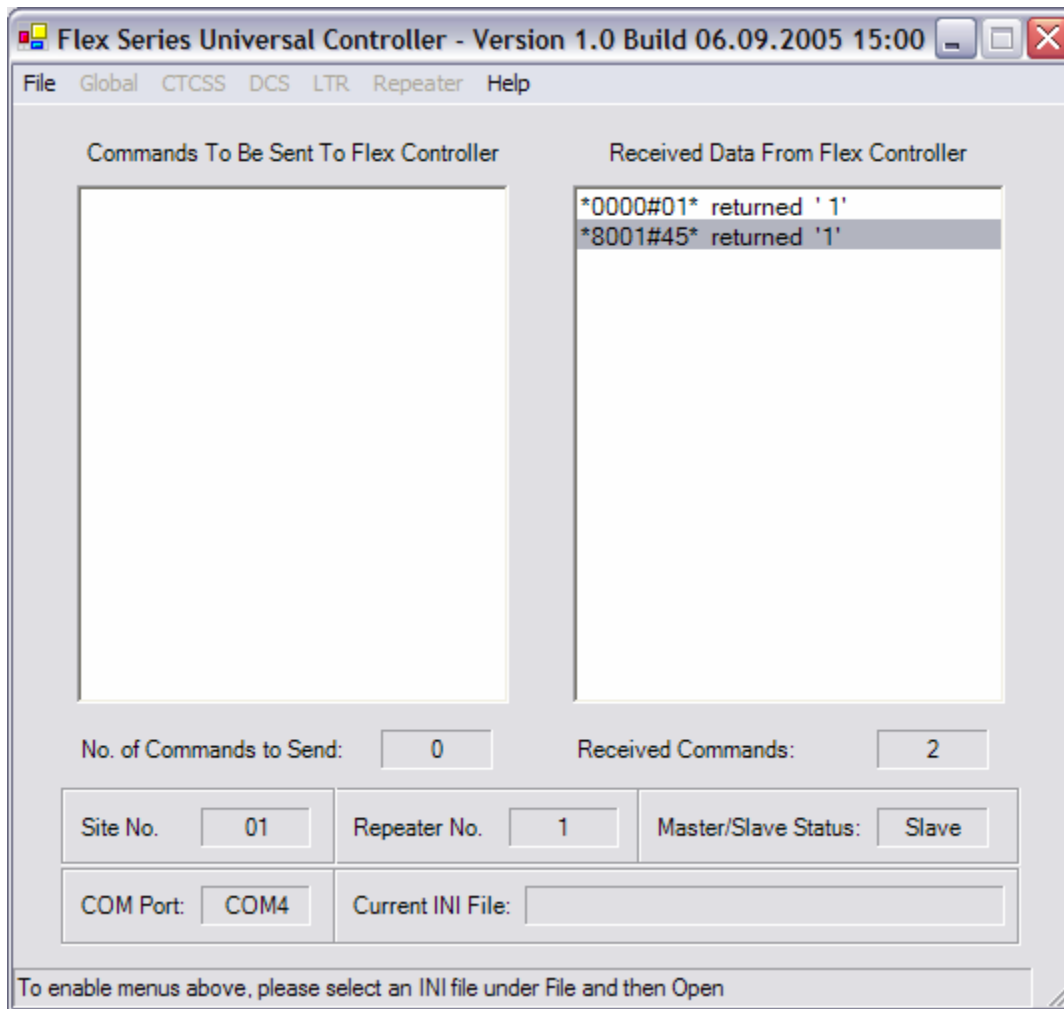


## 5. Steps to set up the controller

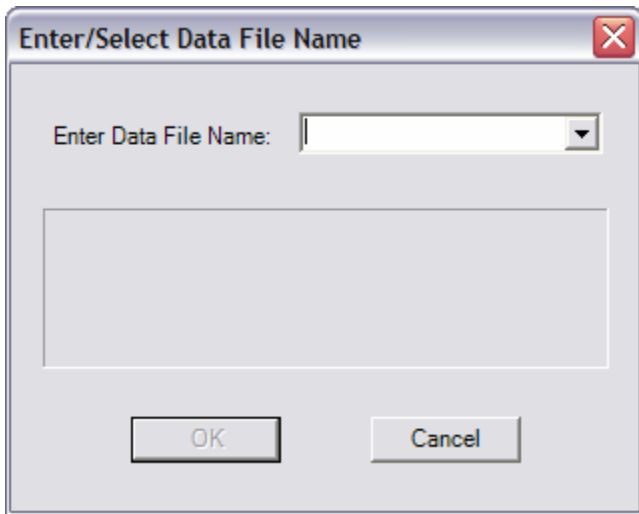
5-a). When you get the FLEX III-A CTCSS, it has the factory default settings. Or you can set the unit back to factory default by using Hyperterminal in your PC or a jumper. (Please refer to the User's Instruction Manual.)

5-b). Connect the FLEX III-A CTCSS to your PC using an RS232 cable.

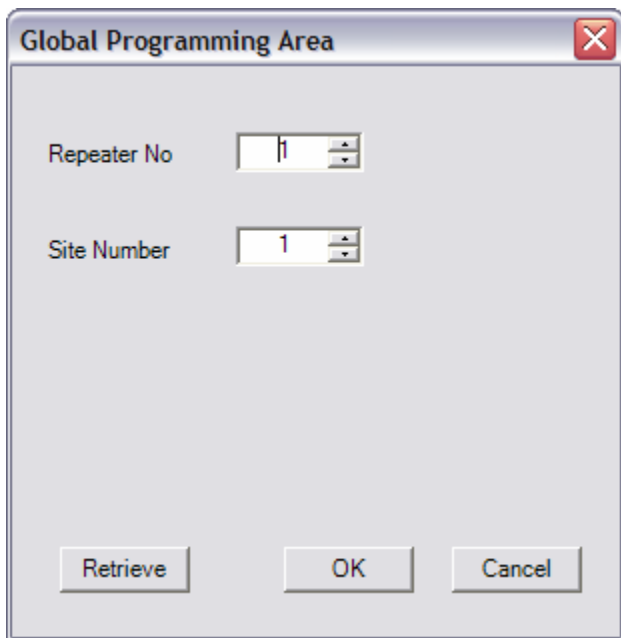
5-c). Run the FLEX Program in your PC. It will ask you to input COM port and Site Number for this FLEX III-A CTCSS. Input the right COM port for your PC and input "Site Number" to 1. You will see the window as follows:



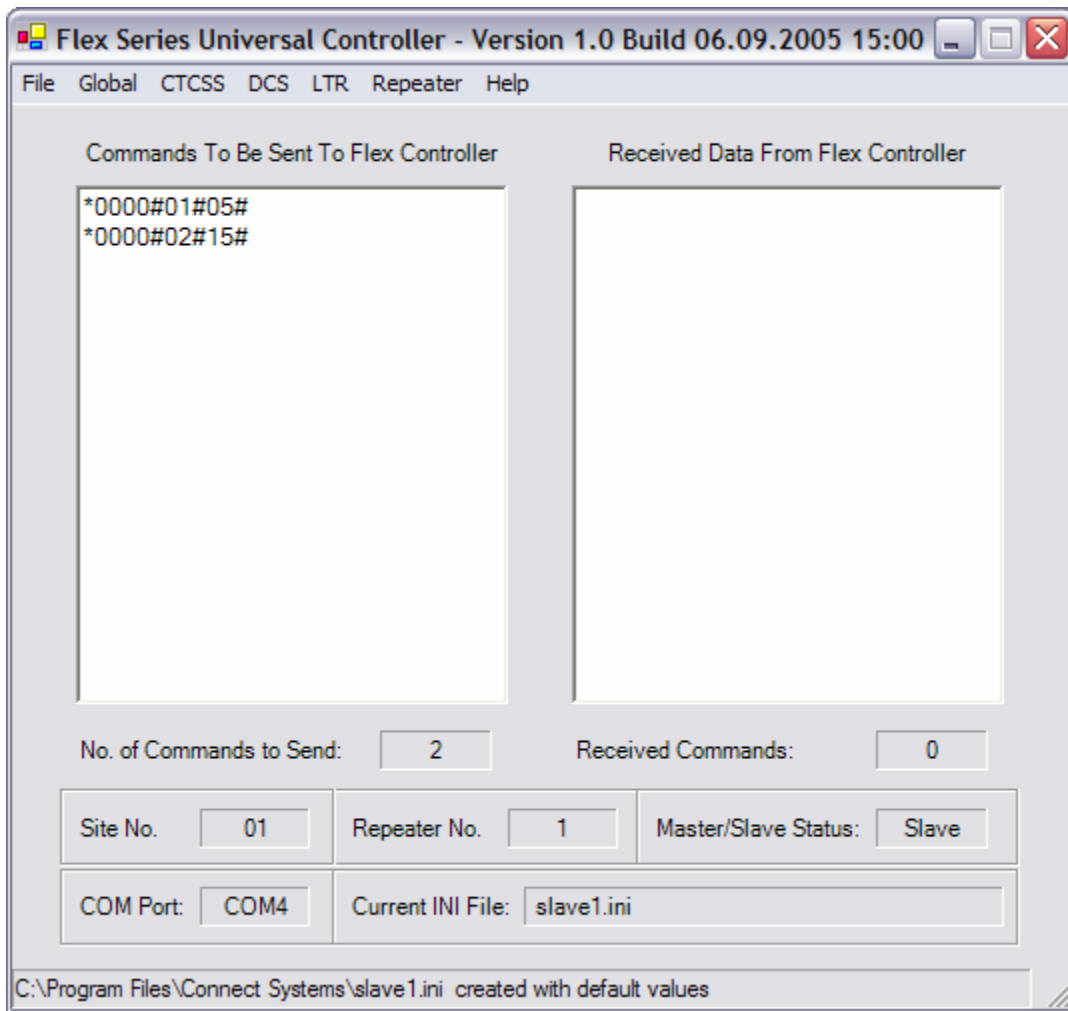
5-d). Choose File->New, give a name. For example, you input "MountainViewSlave5" corresponding to repeater 5 installed at location Mountain View. Note there are no spaces in the name. Click "OK".



5-e). Choose "Globe"-> "Repeater Number". Input the Repeater Number and Site Number. Then click "OK". For this product the Repeater Number and Site Number must be 1.



If you input Repeater Number as 5, site number as 15, you will see the following window:



Remember for this product the site number and the repeater must be set to 1.  
5-f). Choose “File” -> “Send”.

5-g). Repeat above steps to all the FLEX III-A CTCSS controllers.

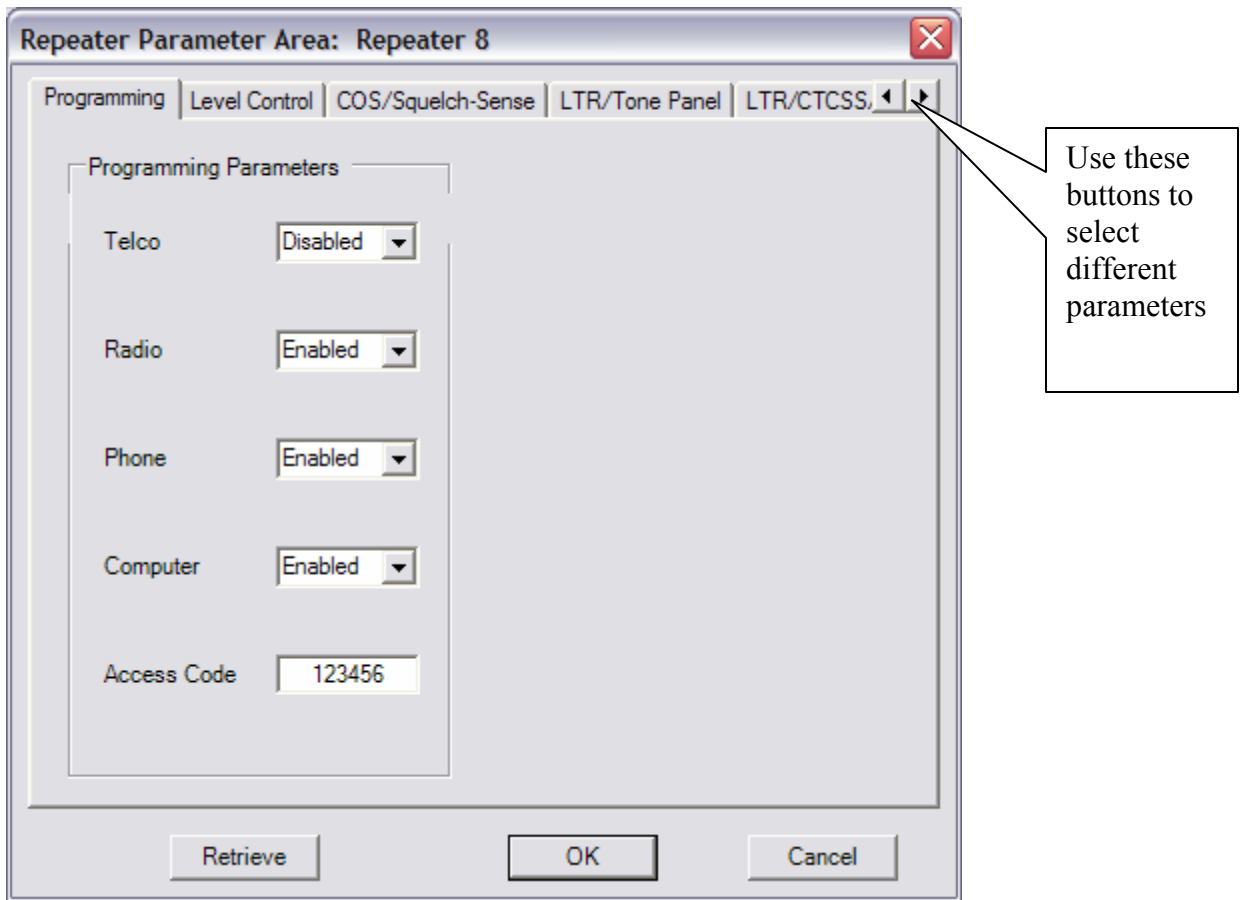
## 6. Steps to set up the controllers as a Master

This product requires the controller to be set up as a master.

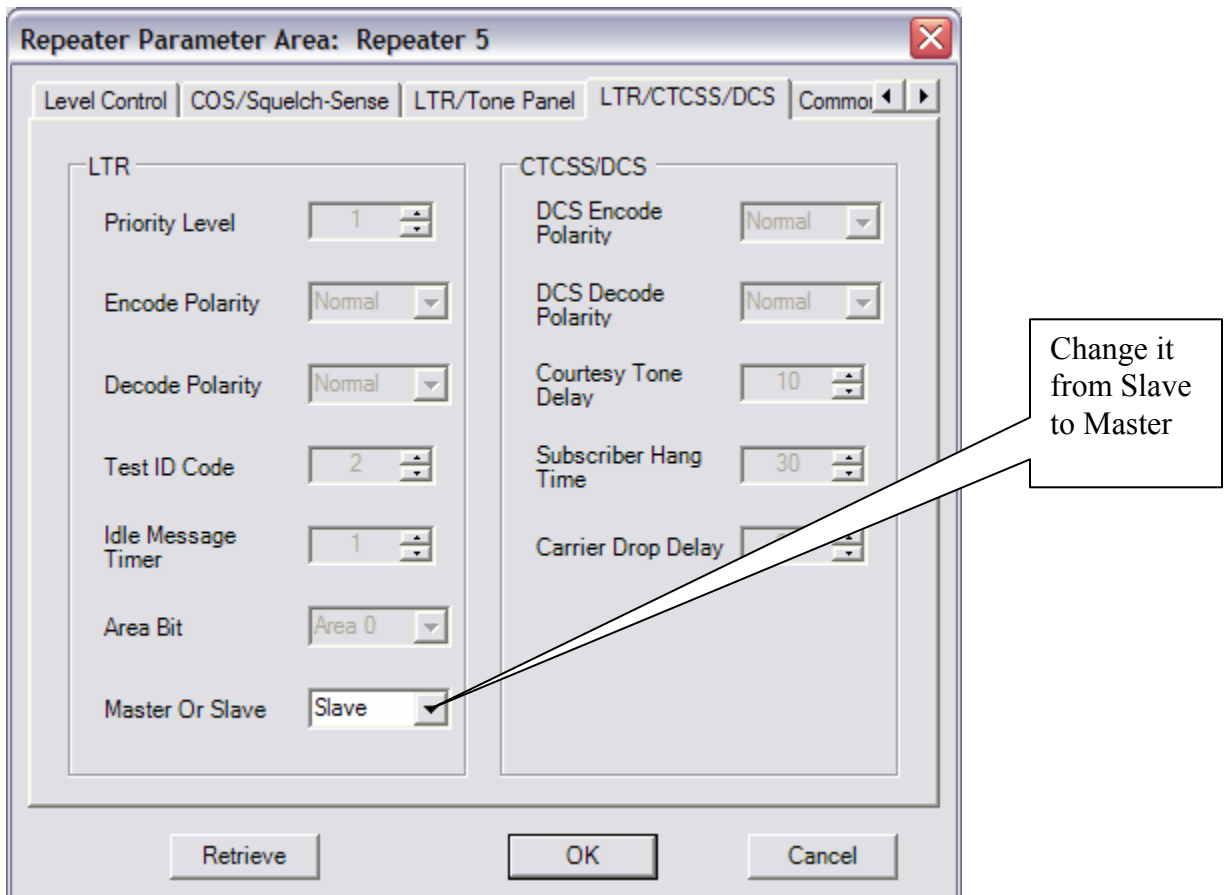
6-a). Repeat 5-a), 5-b), 5-c), 5-d). Give a name for the master, such as MountainViewMaster08.

6-b). Choose “Globe” -> “Repeater Number”. Input the “Repeater Number” and “Site Number”.  
Then click “OK”.

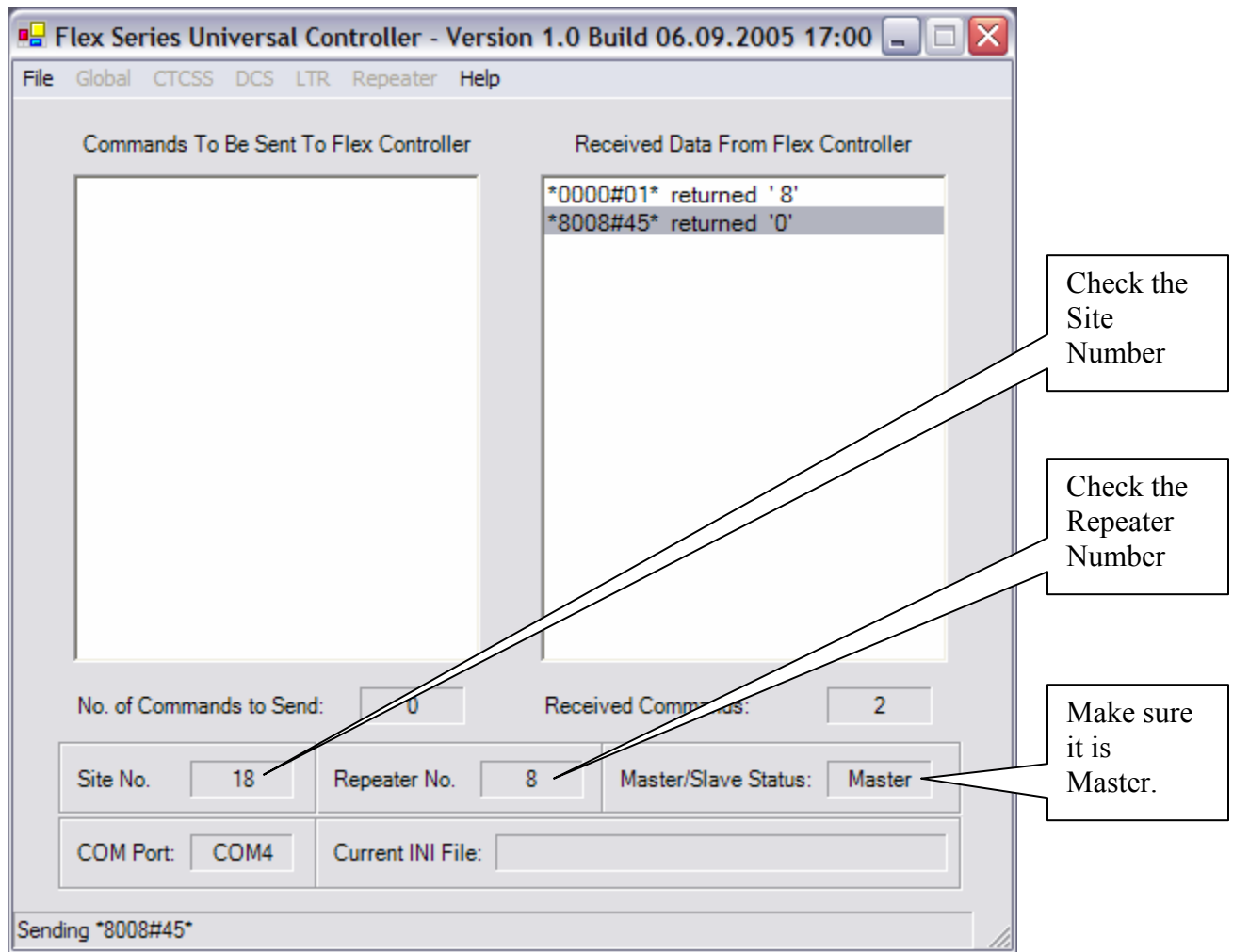
6-c). Choose “Repeater”, select “Repeater NN”. (NN is your master’s Repeater Number).



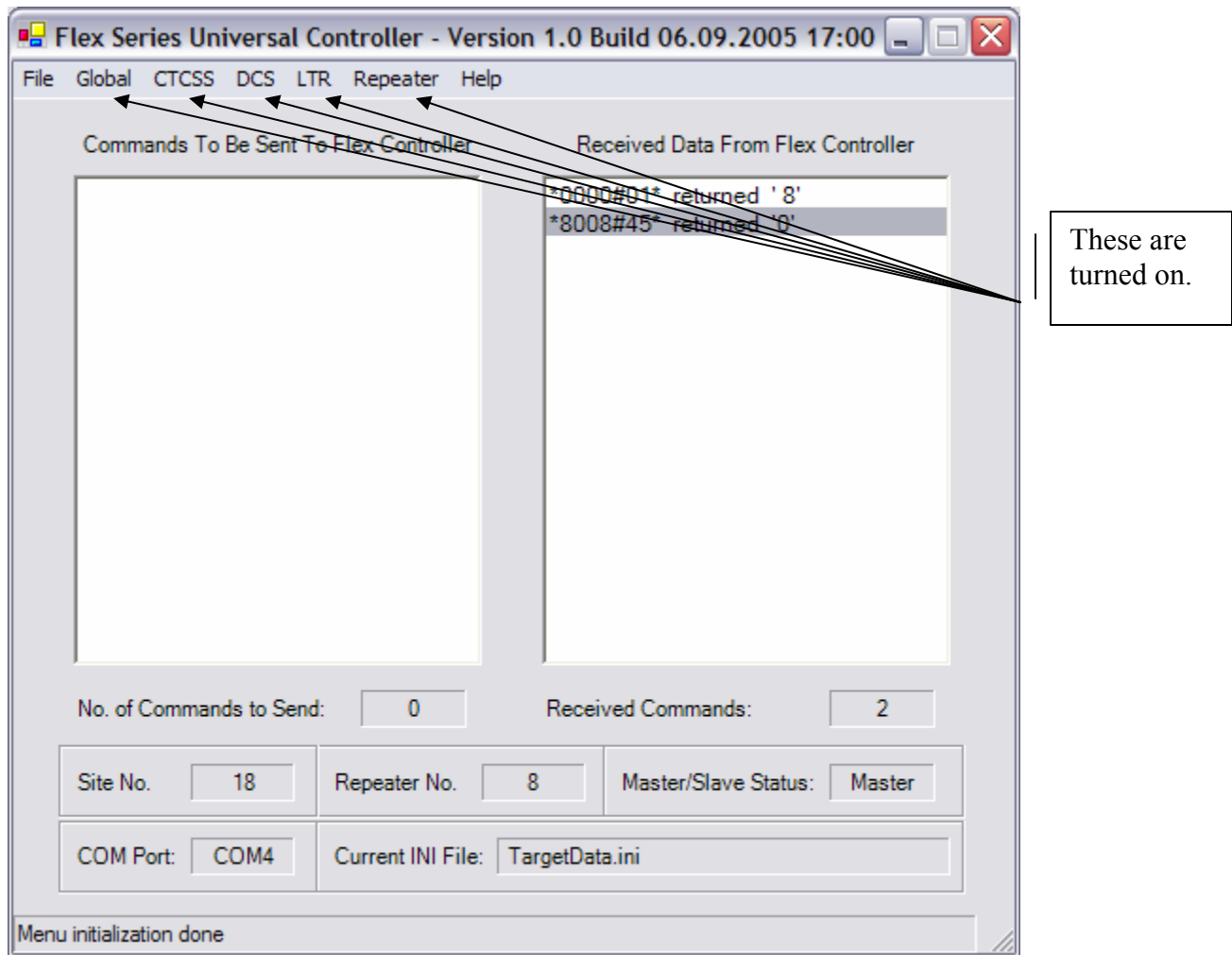
6-d). Choose “LTR/CTCSS/DCS”, then change “Master or Slave” to Master. Click “OK”.



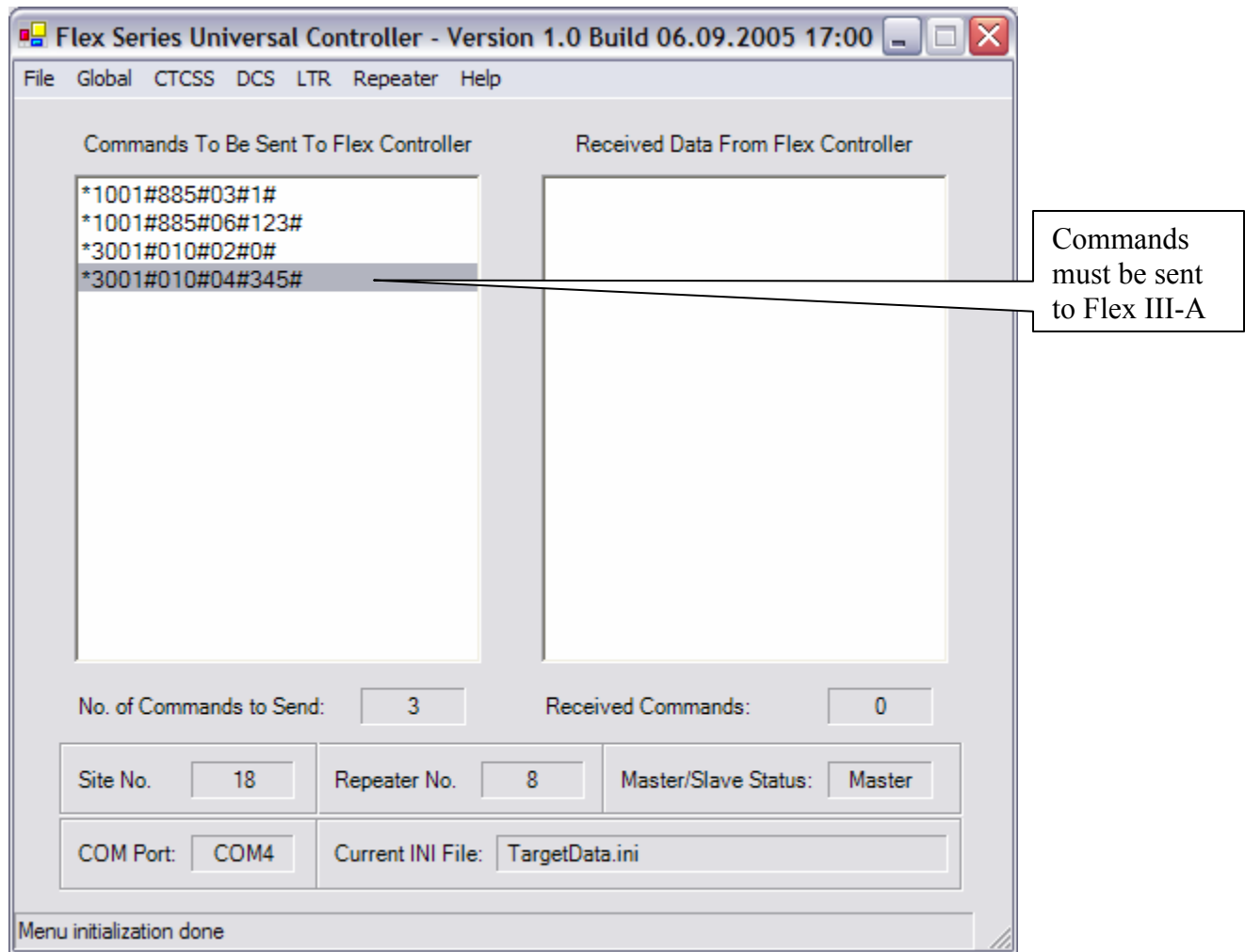
6-e). After you have changed the unit from the slave to the master, you will see the following window.



6-f). You will then see the CTCSS, DCS, LTR, REPEATER are all enabled.



6-g). You can now start to select the parameters you want to change. In each sub window, you click “OK” when you done. It adds the commands in “Commands to Be Sent to FLEX Controller”.

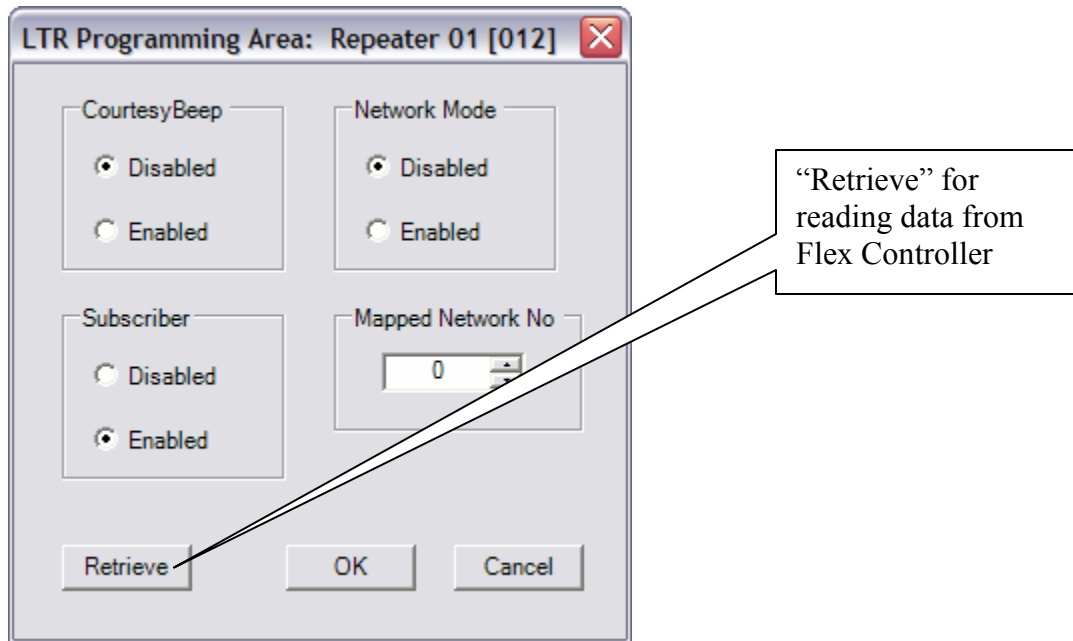


6-h). After you finish selecting parameters, you choose “File”-> “Send”. Wait for the program to send out all commands. Then close the program.

## 7. Helpful Features

### “Retrieve” Button

If you want to read the data in the FLEX IIIA CTCSS Controller, there is a “Retrieve” button in each sub window. When you click “Retrieve”, the FLEX IIIA CTCSS Controller will send the parameters in that sub window back to the sub window.



After finishing read, you can change the parameters in that sub window, click “OK”. The commands will show in “Commands to Be Sent to FLEX IIIA CTCSS Controller. When you are done, choose “File” -> “Send”.

## Timeout Error

The FLEX Program always remembers the last Site Number you were programming. When you try to program another FLEX Controller, you have to wait 20 seconds and get the following message.



Click “OK”. Input the right Site Number. Then you can continue programming.

## How can we avoid the Timeout Error?

There is a way to get around this. Choose “Start” in your PC, -> “My Computer”-> “C:” -> “Program Files” -> “Connect Systems”. Open “SiteNo.txt” using Notepad. Change the number to match the Site Number for the FLEX Controller and save it.

Run FLEX Program, and you will no longer get that Timeout Error.

## **8. Contact Information**

**Phone: (805) 642-7184**

**Fax: (805) 642-7271**

**Email: [ConnectSystems@sbcglobal.net](mailto:ConnectSystems@sbcglobal.net)**

**Address: 5321 Derry Ave, Suite B  
Agoura Hills, Ca 91301**

**If you call, please ask for Jerry**